

P515/1
Principles and practices of
Agriculture
Paper 1
July/ August 2025
½ hours.

Name.....

School.....Signature.....

UACE RESOURCE MOCKS 2025
PRINCIPLES AND PRACTICES OF AGRICULTURE
PAPER 1
(THEORY)
2 ½ HOURS

INSTRUCTIONS TO CANDIDATES

- *This paper consists of sections A and B.*
- *Answer all questions in both sections A and B □ Write the answers to section A in the boxes provided.*
- *Write answers to Section B, in the spaces provided.*

FOR EXAMINER'S USE ONLY		
SECTION	MARKS	EXAMINER'S INITIAL
A 1 – 30		
B 31		
32		
33		
34		
35		
36		
37		
TOTAL		

SECTION A (30 MARKS)

1. Which of the following methods is not used by government to stabilize prices of agricultural products? A. Buffer stock.
- B. Quota system.
- C. Stabilization of funds.
- D. Producing on contracts.
2. Which of the following disease are caused by viruses? A. Coccidiosis and Anthrax.
- B. Brucellosis and mastitis.
- C. New castle and foot and mouth disease.
- D. Rinder pest and milk fever.
3. During phototropism.
- A. Auxins are activated on the illuminated side of the shoot.
- B. More auxins are distributed to the dark side of the shoot.
- C. Auxins are destroyed on the light side of the shoot.
- D. More auxins move to the illuminated side of the shoot.
4. Which of the following describes the ability of a material to with stand shock without much damage or breakage?
- A. Ductility
- B. Brittleness
- C. Toughness
- D. Hardness
5. The most likely disease to have attacked maize when it has smoky grey inflorescence and fruit.
- A. Maize smut.
- B. Maize streak.
- C. Maize blight.
- D. Maize rust
6. The thickness and composition of the soil formed least depends on.
- A. Topography of the land.
- B. Rainfall and temperature of the area.
- C. The type of vegetation in the area.
- D. The system of farming in the area.
7. Which one of the following is a disadvantage of using potassium permanganate solution in carrying out a germination test in bean seeds?

- A. The purple colour remains persistent in un viable seeds.
- B. Viable seeds take long to decolourise the potassium permanganate solution.
- C. It is difficult to compute the germinability percentage.
- D. Some seeds will fail to germinate due to the destruction of the embryo by the chemical solution.
8. Digestible energy refers to the total energy.
- A. In the feed minus the energy lost in feaces.
- B. Contained in the feed consumed by the animal.
- C. In the feed minus the energy lost in urine.
- D. That is absorbed in the body of the animal.
9. Which of the following soil types is determined mainly by climate?
- A. Zonal soils
- B. Azonal soils.
- C. Intrazonal soil.
- D. Mollisols.
10. One advantage of using a spray race over a dip is that.
- A. The acaricide can be applied to pregnant and sick animals.
- B. There is better wetting of animals with the acaricide.
- C. It requires less attention from the operator.
- D. It is cheaper.
11. Which of the following does not affect the price elasticity of demand? A. The availability of substitutes.
- B. The degree of necessity of a product.
- C. Durability of a product.
- D. The number of people in an area.
12. Which one of the following describes the word ration as used in animal feeding?
- A. The amount of food required to keep the animal alive.
- B. The palatability of the feed.
- C. A mixture of feeds that meets an animal's body requirement in a day.
- D. The amount of feed eaten by an animal in a day.
13. The reason for aligning a nursery seed bed along a north-south direction is to
- A. Allow for even distribution of light in the nursery seed bed.
- B. Protect the seedlings from strong wind.
- C. Minimize transpiration of seedlings.
- D. Ease nursery bed operations.
14. Which one of the following may be a result of inbreeding in a population?
- A. Polyploidy.

- B. Improved fertility.
- C. Increased mutation rate.
- D. Increased homozygosity.

15. Which of the following are products of microbial fermentation in the rumen?

- A. Fatty acids and glycerol.
- B. Volatile fatty acids and ammonia.
- C. Peptones and peptides.
- D. Glucose and alcohol.

16. The following are activities involved in decision making in farm management.

- i. Collection of information.
- ii. Problem recognition.
- iii. Analysis of alternatives.
- iv.

Taking action.

- v. Making a decision.

Which one of the following is the correct order of the activities?

- A. (i),(iii),(ii),(iv) and (v).
- B. (iv), (ii), (i), (iii) and (v).
- C. (ii), (i), (iii), (v) and (iv).
- D. (ii), (i), (v), (iii) and (iv).

17. Plants growing under humid conditions lose excess water by

- A. Transpiration
- B. Cuticular transport
- C. Guttation
- D. Use of lenticels

18. Brass is used in moving parts of machines because of the following except. A. Does not wear easily.

- B. Is a good conductor of heat.
- C. Is a good conductor of electricity.
- D. Is resistant to corrosion.

19. Maximum profit in production is realized when

- A. Marginal cost is greater than the marginal revenue.

- B. Marginal revenue is greater than marginal cost.
- C. Marginal cost equals marginal revenue.
- D. Marginal revenue is at maximum.
20. Which of the following represents the correct sequence of stages in the development of spermatozoa?
- A. Primary spermatocyte---Secondary spermatocyte---Spermatids.
- B. Premordial germ cell---Primary spermatocyte---Secondary spermatocyte.
- C. Primary spermatocyte---Spermatids---Secondary spermatocyte.
- D. Premordial germ cell---Secondary spermatocyte---spermatids.
21. Which one of the following is not regarded as an asset on a balance sheet?
- A. Cash at the bank
- B. Net capital
- C. Cash from the sale of crops
- D. Debts receivable.
22. Which one of the following nutrients has the highest amount of potential energy per unit weight?
- A. Proteins.
- B. Vitamins
- C. Carbohydrates
- D. Fats.
23. Which one of the following is not a mounted tractor implement? A. Mould board plough.
- B. Disc harrows.
- C. Fertilizer distributor.
- D. Disc plough.
24. Soil that is fully wetted and allowed to drain freely is said to be. A. Saturated.
- B. At wilting point.
- C. At field capacity.
- D. Water logged.
25. Pulping coffee refers to the removing of the
- A. Red fleshy outer skin from the cherry.
- B. Parchment from the cherry.
- C. Mucilage from the cherry.
- D. Coffee husks from the cherry.

26. When a super –phosphate fertilizer is applied to a clay soil, crops may not show positive response mainly because

- A. Phosphates get fixed into soluble minerals once in the soil.
- B. Clay soils are usually water-logged and so dissolve the phosphate.
- C. Phosphate uptake by the crops is antagonized by the presence of other clay minerals.
- D. Clay soil encourages leaching of phosphates.

27. Which one of the following are utilized by-products resulting from microbial fermentation in the rumen? A. Glucose.

- B. Alcohol.
- C. Acetic acid.
- D. Carbon dioxide.

28. Sometimes back crossing in crops is used in establishing the

- A. Precious crosses.
- B. Phenotype
- C. Yield of the crop.
- D. Genotype.

29. Mushroom cultivation can be done on the following substrates except; A. Chicken manure.

- B. Cotton seed hulls
- C. Cotton straws.
- D. Wood shavings.

30. A driving wheel of 12 teeth drives another wheel of 25 teeth which has load of 120 N.

if the effort used is 80N, what is the efficiency of the machine during its operation?

- A. 2.1%
- B. 1.5%
- C. 72%
- D. 2.08%

SECTION B (70 MARKS)

31. A test was carried out on 256 dried maize seeds using tetrazolium salt in an agriculture research station.

The seeds were soaked in water for 2 hours and later cut longitudinally through their embryo into two

halves to expose the endosperms. There after the halves were immersed in a solution of tetrazolium salt for 30 minutes. After the scheduled time, the endosperms of 396 halves were found not to have changed while those of the remaining halves had turned to colour pink.

a. (i). Why was the test carried out? (1mark)

.....
.....

(ii). What was the purpose of soaking seeds? (1mark)

.....
.....

(iii) Why was there no change in 396 halves? (1mark)

.....
.....

(iv) What did the pink colour signify? (1mark)

.....
.....

b. From the results of the test, calculate the germinability of the maize seeds. (4marks)

.....
.....
.....
.....
.....

c. With reason, state the suitability of the maize seeds for planting. (2marks)

.....

.....

32. Table 1 below shows the concentration in parts per million (ppm) of a pesticide in the bodies of some organisms in an area, 20 years after the use of the pesticide. Use the information to answer the questions that follow.

Table 1.

Organism	Concentration(ppm)
Phytoplankton	0.06
Zooplankton	0.45
Tilapia	3.26
Fish eagle	14.40

a. From the data, explain the concentration of the pesticide in the phytoplankton in relation to that in the fish eagle. (5marks)

.....
.....
.....
.....
.....
.....
.....

b. From the information, what can be deduced about the type of pesticide used? (2marks)

.....
.....
.....

.....
c. Explain the characteristics of a good pesticide. (3marks)

.....
.....
.....
.....
.....

33. (a).Give the meaning of the following terms:

(i).Profit and loss account. (1mark)

.....
.....
.....

(ii).Gross margin (1mark)

.....
.....
.....

(iii).Partial budget (1mark)

.....

.....
.....

(b).State four types of information required to make a farm budget. (4marks)

.....
.....
.....
.....

(c) Give three constraints farmers face in making farm budgets. (3marks)

.....
.....
.....
.....
.....

34. (a)Give four ways in which digestion in ruminants is more beneficial to the animal than digestion in non-ruminants. (4marks)

.....
.....
.....
.....
.....

(b).Describe two symptoms of bloat in animals.

(2marks)

.....

.....

.....

.....

.....

.....

(c).Suggest two ways of;

i. Preventing bloat.

(1mark)

.....

.....

.....

.....

ii. Treating bloat.

(1mark)

.....

.....

.....

.....

(d).Explain the following terms as used in animal nutrition.

(2marks)

i. Digestibility.

.....

.....

.....

ii. Production ration.

.....

.....

.....

35. (a) Differentiate between the terms power and energy as used in farm mechanization.

(2marks)

.....

.....

.....

.....

(b) A pulley system of velocity ratio 3 supports a load of 20N given that the tension in each string is 8N.

Calculate;

i. Effort required to raise the load.

(2marks)

.....
.....
.....
.....

ii. Mechanical advantage. (2marks)

.....
.....
.....
.....

iii. Efficiency. (2marks)

.....
.....
.....
.....

(c).Give an example, describe how a wheel and axle can be used on the farm as a simple machine. (2marks)

.....
.....
.....
.....

36. (a)Mention four reasons for bee swarming. (4marks)

.....

.....

.....

.....

.....

.....

(b).Suggest four factors affecting quality of honey harvested. (4marks)

.....

.....

.....

.....

.....

.....

(c).State four products other than honey obtained from bee keeping. (2marks)

.....

.....

.....

.....

.....

37. (a) Mention five husbandry practices that increases growth and yield in mushroom

production.

(5marks)

.....

.....

.....

.....

.....

.....

(b).Suggest five challenges encountered in mushroom growing.

(5marks)

.....

.....

.....

.....

END

Students Name:

School Name..... Index Number

P515/2
PRINCIPLES AND PRACTICES OF
AGRICULTURE
THEORY
PAPER 2
3 HOURS

UGANDA ADVANCED CERTIFICATE OF EDUCATION

S.6 PRINCIPLES & PRACTICES OF
AGRICULTURE (THEORY)

PAPER 2
3 HOURS

INSTRUCTIONS

- ✓ This paper consists of three sections: A, B, C, D and E.
- ✓ Answer question 1 in section A and four other questions, selecting one from each of the sections B, C, D and E.
- ✓ Write your answers on the answer sheets provided.
- ✓ Any additional question(s) answered will not be marked.

1. The table below shows the results of a research study carried out at Kyambogo university farm to show the effects of age and stages of growth of a pasture species on its nutritive value. Study it carefully and answer the questions that follow.

Growth stage	Dry matter content (%)	Protein content (%)
Buds	5	25
Beginning of flowering	10	20
50% flowering	15	15
Full flowering	20	10
Seed formation	23	5

- a) Represent the information on a graph. (6 marks)
- b) Describe the changes in nutritive value as the pasture species grows. (4 marks)
- c) Explain the changes in the nutritive values of the pasture with stages of growth. (4 marks)
- d) What are the disadvantages of feeding livestock on the pasture species after seed formation? (4 marks)
- e) State with a reason the most suitable stage of growth of pasture species when it should be fed to cattle. (2 marks)

SECTION B (20 MARKS)

CROP PRODUCTION

Answer one question from this section

2. (a) State the qualities of a good inorganic fertilizer for farming. (4 marks)
- (b) Explain the factors that affect crop response to the fertilizers applied. (12 marks)
- (c) Outline the importance of potassium in plant nutrition. (4 marks)
3. (a) Give the benefits of staking in crop production. (5 marks)
- (b) What considerations should a farmer make when grafting? (10 marks)
- (c) State the disadvantages of late planting of crops. (5 marks)

SECTION C (20 MARKS)

ANIMAL PRODUCTION

Answer one question from this section

4. (a) Give for advantages of a top bar hive and disadvantages of a traditional hive. (08 marks)
- (b) Explain the factors considered when choosing a site for an apiary. (08 marks)

- (c) Outline the factors that affect the quality of honey. (04 marks)
5. (a) Differentiate between infectious and contagious diseases. (02 marks)
- (b) Explain six factors that predispose livestock to diseases. (12 marks)
- (c) What is the importance of ensuring food health in livestock? (6 marks)

SECTION D (20 MARKS)

AGRICULTURAL

ENGINEERING *Answer*

one question from this

section

6. (a) Give the various ways of maintaining farm tools and equipment in a good working condition. (06 marks)
- (b) Explain the factors considered while selecting farm tools and equipment for use in the farm? (14 marks)
7. (a) Describe the procedure of constructing a fish pond. (12 marks)
- (b) State the various management practices carried out on a fish pond to maintain it a good condition. (08 marks)

SECTION E (20 MARKS)

AGRICULTURAL

ECONOMICS *Answer one*

question from this section

8. (a) Explain the causes of price instability of agricultural commodities.
(12 marks)

(b) Suggest measures to revert price instability in Uganda.
(08 marks)

9. (a) Define production function.

(02 marks) (b) With aid of illustrations, describe the types of production functions experienced in farming.

(10 marks) (c) Suggest measures of increasing the profitability of a farming business.
(08 marks)

E
N
D

NAME:.....STREAM.....

.....

SIGNATURE:.....

.....

P530/3
BIOLOGY
PRACTICAL PAPER
3¼ HOURS

UGANDA ADVANCED CERTIFICATE OF EDUCATION
END OF TERM 2 EXAMINATION
S.6 BIOLOGY PRACTICAL
P530/3
TIME: 3¼ HOURS

INSTRUCTIONS TO CANDIDATES

- Answer **ALL** questions.
- Drawings should be made in the spaces provided.
- No additional sheets of writing paper are to be inserted
- Use sharp pencils for your drawings, coloured pencils or crayons should **NOT** be used.

FOR EXAMINERS USE ONLY

Question	Marks
1	
2	

3	
Total	

1. You are provided with a freshly killed specimen labelled **M**.

a) Measure the length of the limbs fore and hind limbs. (2 marks)

i) Fore limb.....cm

ii) Hind limb.....cm

iii) State the ratio of the hind to fore limb. (2 marks)

.....
.
.....
.....
.....
.....

iv) Stat the significance of the ratio obtained in (a)ii) above to the life of the specimen. (2 marks)

.....
.....
.....
.....
.....
.....

b) Observe the ventral view of the head.

i) Draw and label the ventral side of the head to show the structures for sensitivity. (5 marks)

ii) State how the features are suitable for environmental perception. (3 marks)

.....

.....

.....

.....

.....

.....

.....

.....

.....

.....

c) i) Place the specimen ventral side upper most. Dissect and stretch the skin followed by pinning it out. Draw and label the muscles observed in the thoracic region and tissues in the neck.

(11 marks)

- ii) Cut out the stomach, open it longitudinally and discard its contents. Examine its walls and state two observable structural differences between the upper and lower regions. (2 marks)

Upper region	Lower region

iii) Dissect the abdominal cavity of specimen M to expose the structures in the viscera. Displace the liver lobes anteriorly to expose the underlying structures without displacing the stomach. Cut the rectum at the base, pull it upwards and pin it to the right side of the specimen. Locate the duodenum, caecum and ileum. Displace the duodenum and caecum to the right side of the specimen and the ileum to the left side of the specimen. Draw and label the displayed structures of the alimentary canal of the abdominal cavity up to the pinned rectum including the mesenteric structures attached to the small intestines. (16 marks)

2. You are provided with solution A and B. Solution A is a plant extract.

- a) Follow the procedure below to carryout the experiments that follow to find out the effect of varying temperatures to the rate of enzyme activity.

Procedure

- i) Measure 2cm of A Into 10V measuring cylinder
- ii) Use the second 10V measuring cylinder to measure 2cm³ of B and pour it into a test tube.
- iii) Incubate the test tube containing 2cm³ of **B** at 25°C (room temperature) in water bath you have set up for two minutes.
- iv) Then pour incubated 2cm³ or **B** into 10V measuring cylinder containing 2cm³ of A and immediately start the stop clock.
- v) Read the volume of mixture of A and B and froth formed in two minutes and record it in the table below.
- vi) Repeat the procedure above for 35°C, 45°C, 55°C and 65°C and record the volume of mixture of A and B and froth formed in the same table.

Table of results

(5

marks)

Temperature of water bath °C	Volume of mixture A and B and froth formed in cm ³	
25 (room temperature)		
35		
45		
55		
65		

- b) Pour 2cm³ of A into 10V measuring cylinder followed by five drops of P and 2cm³ of B. immediately start the stop clock. Note and record the volume of mixture of A and B and froth formed after two minutes.

Repeat the procedure above in (b) above but use Q instead of P.

Volume of mixture A and B and froth in presence of P.

(1

mark)

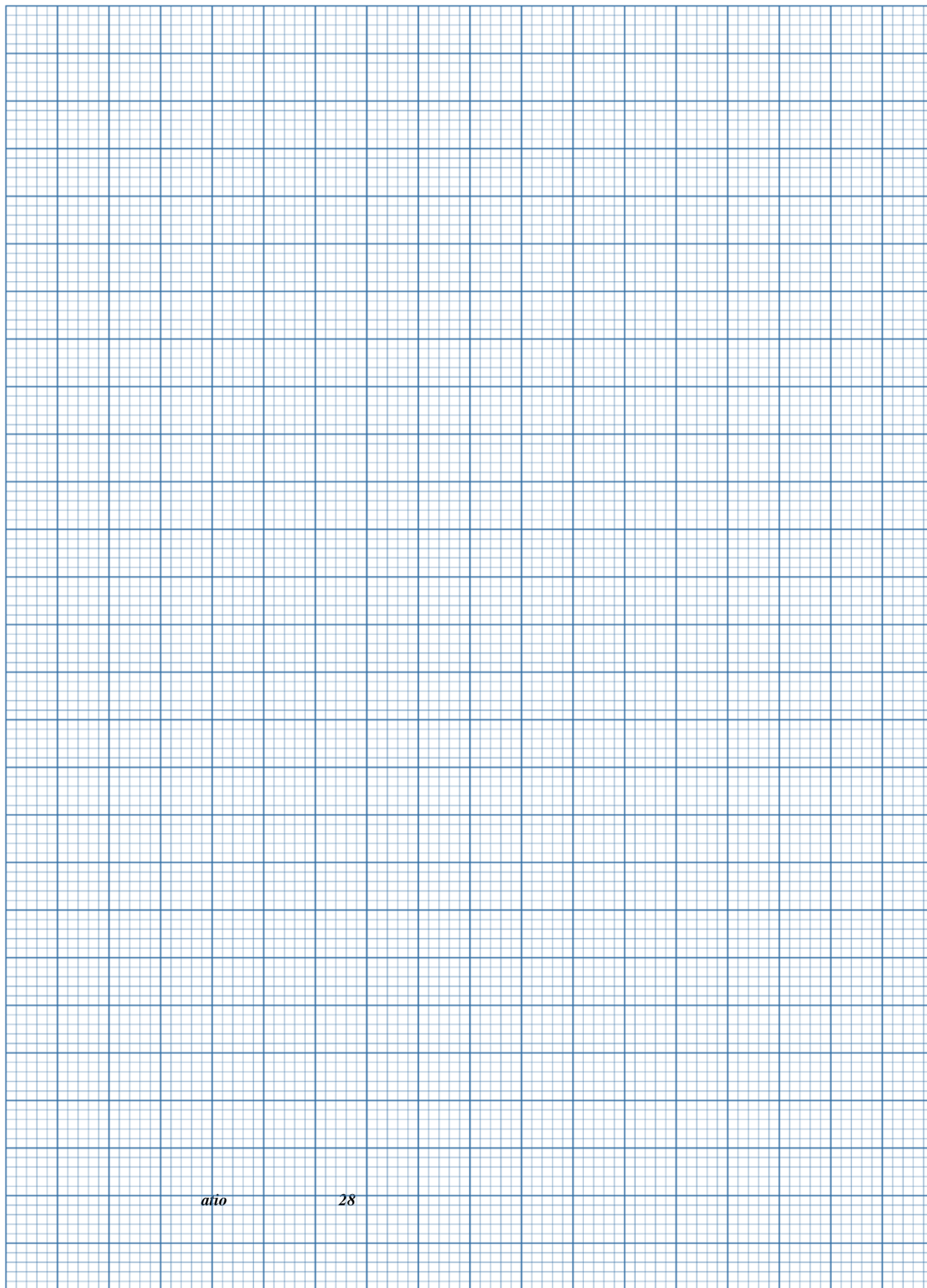
.....
.....
.....

Volume of mixture of A and B and froth in presence of Q. (1
mark)

.....
.....
.....

c) Present the results recorded in the table above on the graph below.

(7 marks)



i) State the aim of the experiments in 2 (a) and 2 (b) above. (1 mark)

.....
.....
.....
.

ii) With a reason suggest the nature of the active substance in solution A. (2 marks)

.....
.....
.....
.

d) Explain the results recorded for different temperatures and in presence of **P** and **Q**.

At room temperature

.....
.....
.....
.....
.

At 35⁰C

.....
.....
.....
.....
.

At 45⁰C

.....
.....
.....

.....

....

At 55⁰C

.....

.....

.....

.....

.

At 65⁰C

.....

.....

.....

.....

.

.....
.....
.....
.....
.....
.....
.....

b) Remove one of the leaves of specimen K Strip off a piece of the inner most layer and place it on a slide with a drop of water and cover with a cover slip. Examine under the medium power of a microscope.

i) Describe the structure of a cell, clearly seen (2 marks)

.....
.....

ii) Now examine under low power of a microscope, count and record the number of cells in field of view. (2 marks)

From left to right.....

From top to bottom.....

c) i) Remove the slide from the stage, measure the field of view using a transparent ruler and record your results.

Field of view.....mm

ii) Convert the diameter of the field into micrometres (um). Show your working (2 marks)

.....
.....
.....

iii) Calculate the actual length of the one cell in micrometres (um), show your working (3 marks)

.....
.....
.....

d) Return the slide having the tissue onto the stage. Draw one cell from the tissue being observed under the medium power of a micrometer. (3 marks)

END

S.6 END OF TERM 2 2025 EXAMINATION

CONFIDENTIAL

- Specimen M freshly killed rat
- 50 cm long thread
- Solution A – 300g/l Irish potato
- B – 1% H₂O₂
- P – 2M NaOH
- Q – 2MHcl
- Two 10V or 20V or 25V measuring cylinder
- Three test tubes
- Two beakers (250V)
- Thermometer
- Hot water
- Fresh half onion bulb labelled K
- Light microscope
- Cover slip

Name: Index No
.....

Signature:.....

P530/1
Biology
(Theory)
Paper 1
2 ½Hours

Uganda Advanced Certificate of Education
BIOLOGY (THEORY)
Paper 1
TIME: 2 hours 30 minutes

Instructions:

- Answer all questions in both sections **A** and **B**
- Answers to Section **A** should be written in the boxes provided and those to Section **B** in the spaces provided.

SECTION A

1. Which of the following is true of Gibberellins, they
 - A. Are responsible for phototropism and geotropism.
 - B. Are gases at room temperature
 - C. Are produced only by fungi
 - D. Cause bolting in some biennial plants

2. Small seedlings may fail to emerge when sown deep into the soil because they;
 - A. Are suppressed by soil during upward growth.
 - B. Do not get enough water
 - C. Exhaust their food reserves before emerging
 - D. Do not get enough air

3. The position of animal within a pecking order usually depends on the following except
 - A. Aggressiveness
 - B. Size of the animals
 - C. Fitness of the animals
 - D. Genetic vigour of the animal

4. Which of the following is a physiological adaptation of the terrestrial plants to minimize water loss?
 - A. Leaf orientation
 - B. Folding of plants leaves
 - C. Periodic shedding of leaves
 - D. Change of stomata rhythm

5. Which of these is a compound plant tissue?

A. Parenchyma	C. Epidermis
B. Xylem	D. Collenchyma

6. A population's carrying capacity is;
 - A. The number of individuals in that population
 - B. Reached when the number of deaths exceeds the number of birth
 - C. Inversely related to maximum rate of increase
 - D. The population size that can be supported by available

7. Which of these is not true in seral succession?
 - A. Increase on the proportion of woody parts in plants
 - B. Increase in the ratio of respiration to photosynthesis
 - C. Increase in the proportion of leaves to bark and wood
 - D. Decrease in the number of herbaceous plants compared to the other plants

8. The importance of long refractory period in cardiac muscle is to prevent it from
 - A. Contracting strongly
 - B. Pumping too much blood to the tissues
 - C. Developing tetanus
 - D. Developing an oxygen debt

9. Which of the pairs show a synergistic interaction

- A. Gibberellins and auxins
- C. Cytokines and ethane
- B. Ethane and abscisic acid
- D. Abscisic acid and cytokines

10. Bile is manufactured in the human liver by the;

- A. Kupffer cells
- B. Hepatocytes
- C. Sinusoids
- D. Bile canaliculi

11. Which of the following may have no immediate effect on body metabolism

- A. Increase in body temperature
- B. Acclimatization
- C. Release of thyroxine
- D. Perspiration

12. Which of these parts of skeletal muscles contains all the rest

- A. Myofibril
- B. Sarcomere
- C. Myofilaments
- D. Muscle fibre

13. Receptors exhibit all the following except

- A. Secretion of neurotransmitters
- B. Production of an action potential
- C. Production of a generation potential
- D. An all or none response to a stimulus

14. A certain gene in a bacterium codes for a polypeptide that is 120 amino acids long

. How many nucleotides are needed in the mRNA to code for this polypeptide.

- A. 30
- B. 40
- C. 360
- D. 480

15. Which process has the greatest effect in determining which members of a population are most likely to survive until reproductive age

- A. Evolution
- B. Natural selection
- C. Meiosis
- D. Hybridization

16. The gene for albinism is also responsible for light skin color, pink eyes and grey hair. This is an illustration of

- A. Linkage
- B. Epitasis
- C. Pleiotropy
- D. Co-

dominance

17. Messenger RNA is important in proteins synthesis because it

- A. carries the code from DNA to the nucleus
- B. carries the code from DNA to the ribosome

- C. is transmitted to the nucleotides
- D. contains the pyrimidine base thymine

18. Which of the following is not a major function of lipids in the human body

- A. Short time energy store
- B. synthesis of hormones
- C. long term store
- D. insulation

19. During water stress photosynthesis reduces in plants mainly due to the shortage of

- A. Carbon dioxide
- B. Mineral salts
- C. Water
- D. Sunlight

20. Prokaryotic cells divide by

- A. Mitosis
- B. Meiosis
- C. Budding
- D. Binary fission

21. Which of the following best describes the tertiary structure of a protein

- A. interaction of polypeptide units and prosthetic group
- B. interactions forming hydrogen bonds between the amino acids
- C. sequence of amino acids in the polypeptide chains
- D. structure formed from interactions between the amino acids

22. Red green color blindness is a sex linked condition. Which of the following always shows normal vision

- A. a homozygous male
- B. a homozygous female
- C. a heterozygous male
- D. a heterozygous female

23. An animal has radial symmetry asac-like body with only one opening and tentacles.

To which phylum does it belong?

- A. Annelid
- B. Cnidaria
- C. Mollusca
- D. Porifera

24. At which stage during meiosis does pairing of chromosomes occur in prophase 1?

- A. Diplotene
- B. Zygotene
- C. Leptotene
- D. Pachythene

25. Newly synthesized polynucleotide chains are joined together by action of an enzyme called

A. DNA- ligase
synthase

C. Amino acyl + RNA

B. DNA- polymerase

D. Nuclease

26. Which one of the following is a different taxonomic hierarchy?

A. Amphibia

C. Annelida

B. Bryophyta

D.

Platyhelminthes

27. When conditions are dry , spirogyra reproduces by

A. Conjugation

C.

Fragmentation

B. Sporulation

D. Budding

28. In which of the following organisms does a notochord exist?

A. Amphioxus

C. Cockroach

B. Hydra

D. Earth

worm

29. In *Drosophila melanogaster*, the gene for red eye (R) and normal wing (w) are dominant to alleles (r) for purple eye and (w) for vestigial wing. Crosses between a fly of genotype RrWw and rrw yielded offsprings as follows:

Red eyes, normal wings 40%

Red eyes, vestigial wings 10%

Purple eyes, vestigial wings 40%

Purple eyes, normal wings 10%

These

results

illustrate:

A. Crossing over

C. Sex

linkage

B. Hybridization

D.

Mutation

30. Which of the following would lead to genetic a death in a population?

A. Haemophilia

C. Infertile

males

B. Sickle cell trait

D. Albinism

31. Both facilitated diffusion and active transport require;

A. Adenosine triphosphate

B. Protein carries

C. Unidirectional movement of solutes

D. That the solutes moved be soluble in lipids

32. Systole in the heart begins with;

A. Activation of the atrio-ventricular node

B. Activation of the sino-atrial node

C. Opening of the potassium gates

D. Opening of semi lunar valves

33. A person has a tidal volume of 0.36dm^3 and breathing rate of 18 breaths per minute.

The person's ventilation rate is

A. $6.48\text{dm}^3\text{min}^{-1}$

C. 64.8dm^3

min^{-1}

B. $0.02\text{dm}^3\text{min}^{-1}$

D. $2.0\text{dm}^3\text{min}^{-1}$

1

34. During stress, conversion of glycogen to glucose is stimulated by;

A. Insulin

C.

Adrenaline

B. Glucagon

D.

Thyroxine

35. All hormones ;

A. Are secreted by glands

B. Have receptors on cell surface

C. May stimulate different response in different cells

D. Affect target cells distant from their sites of release

36. In a life cycle that involves alternation of generations,

A. Sporophyte generation is always dominant

B. Gametophyte generation produces the spores

C. Spores develop into the sporophyte generation

D. Gametophyte generation is haploid

37. Which of these would describe a heterozygous individual?

A. One with completely different sets of genes

B. One with identical alleles for a particular gene

C. One with only one functional allele

D. One with two different alleles for given gene.

38. Mosses and liverworts absorb water through their

A. Roots

C. Stems

B. Leaves

D. Whole

surface

39. Which of these organelles has the greatest amount of energy?

A. Herbivores

C. Omnivores

B. Carnivores

D.

Decomposers

40. Rapid transport of material within the cytoplasm is associated with

A. Spindle fibres in the dividing cells

- B. Extensive endoplasmic reticulum
- C. Plasma membrane pores
- D. Extensive Golgi bodies

SECTION B

41. (a) Explain why

(i) Breathing pure oxygen atmosphere pressure presents no problems

(2mrks)

(ii) Rebreathing one's own air can be fatal

(2mrks)

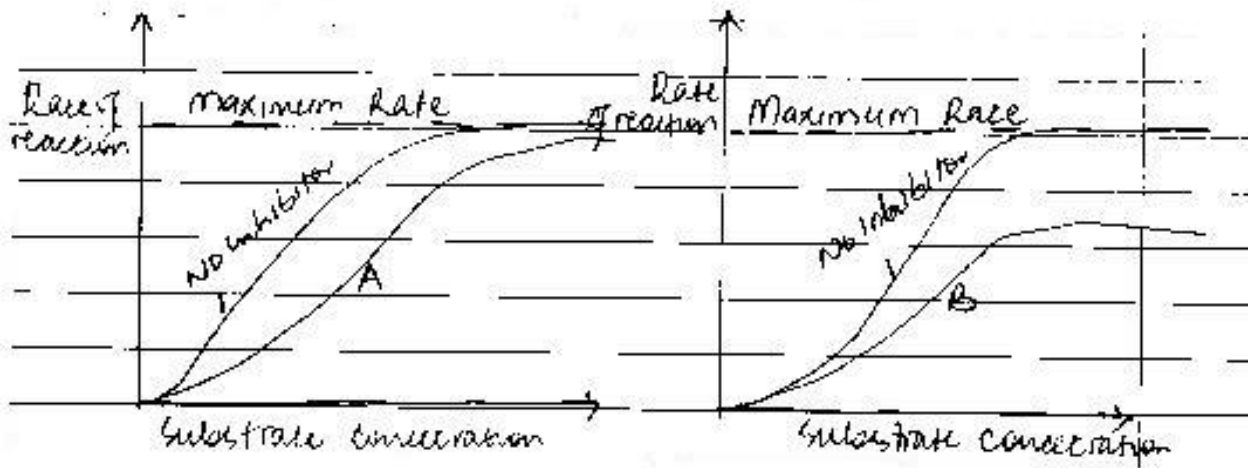
(b) State three physiological differences between the gaseous exchange system in man and that in insects

(3mrks)

(c) Explain how insects can control the amount of oxygen to the tissue during flight.

(3mrks)

42. a).The graphs show the effects of two different inhibitors on the rate of a reaction.



(i) Identify the inhibitors

A. (1mrks)

B. (1mrks)

(ii) Explain your answer in a(i) above

A. (2mrks)

B. (2mrks)

b) State two ways enzyme inhibitors have been put to use by man. (2mrks)

c) Explain how heavy metals act as non-competitive inhibitors. (2mrks)

43. (a) Explain why ;

i. there is very little excretion of nitrogenous waste substance in plants. (2mrks)

(ii) Osmoregulation in hydrophytes (3mrks)

(iii) how organisms living in an environment of higher water potential maintain a constant Osmotic environment (2mrks)

b) State three difference between Osmocentromers and Osmoregulators

44. (a) what is photorespiration (1mrks)

(ii) State three difference between photorespiration and respiration (3mrks)

b) Explain why the kranz anatomy prevents photorespiration (3mrks)

c) Explain the effect of temperature on the rate of photosynthesis (3mrks)

45. (a) State two main characteristics of learned behavior. (2mrks)

b) With an example in each case distinguish between the following forms of associative learning.

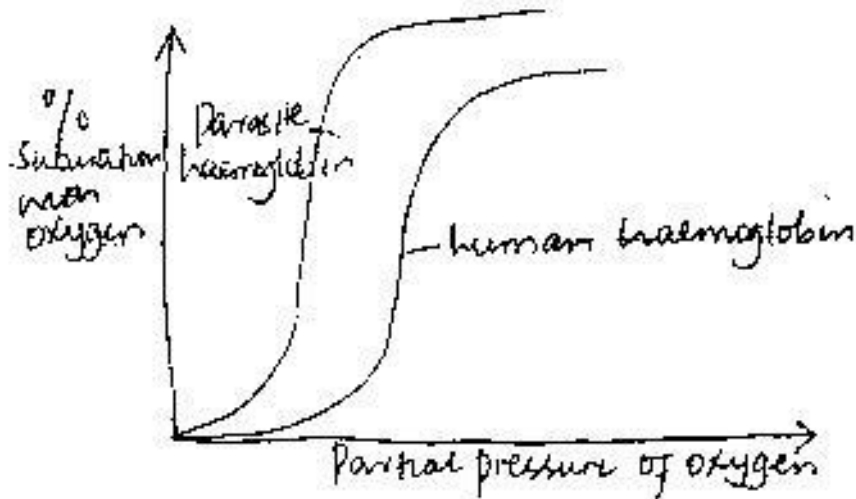
(i) Conditioning
(2mrks)

(ii) Trial and error learning (2mrks)

c) State the importance of each type of associative learning to animals in their natural environment
(2mrks)

d) Explain why unlike innate behavior learned is likely to vary between individuals of the same species.
(2mrks)

46. The graph shows the oxygen dissociation curve for [human haemoglobin and that of a parasitic Platyhelminth that lives in the small intestines.



a) Explain how haemoglobin releases oxygen when it reaches the cells of the wall of the small intestine.
(03 marks)

b) Explain the position of the curves for parasite and human haemoglobin.
(2mrks)

c) Explain the advantages to the parasite of having haemoglobin with a curve in the position above.
(2mrks)

d) State two physiological adaptations parasitic platyelmint in the small intestines possess.
(2mrks)

END

HOLIDAY WORK
S.6 C.R.E. P245/2
(THE NEW TESTAMENT)
TIME: 2 HOURS 30 MINUTES

INSTRUCTIONS:

- **This paper consists of three sections A, B and C.**
- **Candidates must answer four questions taken from the three sections.**
- **One from section A, two from section B and One from section C.**
- **In section B, one question must be either Number 5 or Number 6.**
- **All questions carry equal marks.**
- **Any additional question answered will not be marked.**

SECTION A
(APOSTOLIC CHURCH)

1. a) Account for the rapid expansion of the Church amidst great opposition in the early church.
(13 marks)
- b) Analyze the problems that have cropped up as a result of the expansion of the church today?
(12 marks)
2. a) Examine the significance of table fellowship as organized by Christians in the oral period?
(13 marks)
- b) How is this ritual abused by Christians in the modern Church? (12 marks)

SECTION B
(MARK AND JOHN)

3. a) Discuss the meaning of Jesus' parable of the Sower as recorded in the gospel according to Mark?
(13 marks)
- b) Examine the significance of this parable to Christians today?
(12 marks)
4. a) Discuss the circumstances under which Jesus was transfigured in Mark's gospel?
(13 marks)
- b) Justify the view that the modern church is a transfigured church?
(13 marks)
5. a) Comment on the view that women were good disciples of Jesus in the gospels of John and Mark?
(15 marks)
- b) How have women contributed to the spread of the gospel today?
(10 marks)
6. Compare Jesus' triumphal entry to Jerusalem as recorded in the gospels of Mark and John?
(25 marks)

7. a) To what extent did Jesus fulfill the messianic expectations of the Jews in the gospel according to John? (15 marks)
- b) How can Christians act as witnesses to Jesus' messiahship today? (12 marks)
8. a) Discuss the significance of the 7th sign in John's gospel? (13 marks)
- b) Comment on the relevance of the above sign to the Church today? (12 marks)

SECTION C (LETTERS)

9. "You are to hand this man over to Satan for his sinful body to be destroyed, so that his spirit may be saved on the day of the lord" 1 Cor. 5:5.
- a) Account for St. Paul's great concern over this boy in the above statement? (13 marks)
- b) How significant is Paul's response to the Church in chapter 5:1-13 to Christians today? (12 marks)
10. a) Discuss Paul's teaching on Christian freedom in his letter to the Galatians? (13 marks)
- b) How can Christians use their freedom today? (12 marks)
11. a) Examine Peter's teaching on the Shepherds and the flock? (13 marks)
- b) How have modern shepherds failed to live to the expectations of the chief shepherd? (12 marks)
12. a) Analyze James' teaching on the dangers of wealth? (13 marks)
- b) How can Christians use their wealth today? (12 marks)

END

**P220/1
ECONOMICS
Paper 1**

3 hours.

HOLIDAY WORK

**UACE MOCK 1 EXAMINATIONS 2025
ECONOMICS**

Paper 1

3 hours.

INSTRUCTIONS TO CANDIDATES

*Answer only **five** questions in this paper.*

*Section **A** is compulsory. Answers to this section should be concise.*

*Attempt any **four** questions from section **B**.*

*All questions in section **B** carry equal marks.*

*Any additional question(s) attempted **will not** be marked.*

Credit will be given for use of relevant diagrams.

SECTION A (20 MARKS)

*Answer **all** parts of this question.*

1. a) (i) Define **an opportunity cost curve**. (1 mark)
- (ii) Outline any **three** uses of an opportunity cost curve. (3 marks)
- b) (i) Distinguish between **explicit costs** and **implicit costs**. (2 marks)
- (ii) State any **two** examples of explicit costs in an economy. (2marks)
- c) (i) Distinguish between **intra sectoral dualism** and **exchange dualism**.

- (ii) Outline any **two** demerits of dualism in an economy. (2 marks)
- (2 marks)
- d) (i) Define **agricultural modernization**. (1 mark)
- (ii) Give any **three** intentions of agricultural modernization in developing countries. (3 marks)
- e) (i) Define a **partial plan**. (1 mark)
- (ii) Outline **three** features of a good plan. (3 marks)

SECTION B (80 MARKS)

*Answer **only four** questions in this section.*

2. (a) Explain the role of price mechanism in resource allocation in an economy. (8 marks)
- (b) Discuss the limitations of price mechanism in resource allocation in an economy. (12 marks)
3. (a) Distinguish between **consumer price index** and **cost of living index**. 4 marks)
- (b) Describe the procedure involved in calculating the cost of living index. (8 marks)
- (c) What challenges are faced in the computation of the cost of living index in an economy? (8 marks)
4. (a). Explain the **marginal productivity theory of distribution**. (6 marks)
- (b). Examine the relevance of the marginal productivity theory of wages in developing countries. (14 marks)
5. (a). Assess the effects of hyper inflation in an economy. (10 marks)
- (b) What measures may be taken to reduce inflation in an economy? (10 marks)
6. (a) Distinguish between **direct taxes** and **indirect taxes**. (4 marks)
- (b) Why do most governments of developing countries rely more on indirect taxes

- than direct taxes? (10 marks)
- (c) Explain the adverse effects of over relying on indirect taxes in an economy. (6 marks)
7. (a) Differentiate between **import trade** and **export trade**. (4 marks)
- (b) Discuss the outcomes of participating in international trade. (16 marks)

END

P220/2
ECONOMICS
Paper 2
July 2025
3 hours.

UACE MOCK 1 EXAMINATIONS 2025
ECONOMICS
Paper 2
3 hours.

INSTRUCTIONS TO CANDIDATES

*Answer only **five** questions in this paper.*

*Section **A** is compulsory. Answers to this section should be concise.*

*Attempt any **four** questions from section **B**.*

*All questions in section **B** carry equal marks.*

*Any additional question(s) attempted **will not** be marked.*

Credit will be given for use of relevant diagrams.

SECTION A: (20 MARKS)

*Answer **all** parts of this question.*

1. a) (i) Distinguish between a **reserve price** and a **normal price**. (2 marks)
- (iii) Outline any **two** factors that affect commodity prices in Uganda.

- (2 marks)
- b) (i) Distinguish between **autonomous consumption** and **induced consumption**. (2 marks)
- (ii) State any **two** factors that may lead to a decrease in consumption expenditure in Uganda. (2 marks)
- c) (i) Define the term **full employment**. (1 mark)
- (ii) Outline any **three** constraints to the attainment of full employment in Uganda. (3 marks)
- d) (i) Define **natural resource endowment**. (1 mark)
- (ii) Give any **three** objectives of increasing natural resource exploitation in Uganda. (3 marks)
- e) Mzee Kiruuta derived annual rent incomes of Shs 3,000,000 from a house in Kiti, Shs. 1,800,000 from a house in Kijjudde and Shs. 2,400,000 from a house in Manja. Given that the annual threshold is Shs. 2,820,000 and rental income tax rate of 12%. Compute Mzee Kiruuta's
- (i) Gross rental income. (2 marks)
- (ii) Rental income tax payable to URA. (2 marks)

SECTION B: (80 MARKS)

*Answer **only four** questions in this section.*

2. (a) Discuss the different forms of price discrimination in Uganda. (4 marks)
- (b) Explain how a monopolistic firm determines output, price and profits in Uganda in the short run. (6marks)
- (c) Analyze the consequences of the continued existence of monopolistic firms in Uganda. (10 marks)
3. (a) Account for the increasing need to accelerate the rate of economic growth in Uganda? (10 marks)
- (b) What steps are being done to accelerate the rate of economic growth in Uganda?

(10 marks)

4. (a). Describe how commercial banks create credit in Uganda. (10 marks)

(b). What can the central bank of Uganda do to limit excessive credit creation?

(10 marks)

5. (a). “Uganda should encourage more growth of import substitution industries if it is to attain a faster rate of economic growth”. Discuss. (12 marks)

(b) What measures have been taken to promote the growth of import substitution industries in Uganda? (8 marks)

6. (a) Distinguish between **centralized planning** and **decentralized planning**. (4 marks)

(b) Explain the role of economic development planning in Uganda. (16 marks)

7. (a) Examine the contributions of the private sector in Uganda. (10 marks)

(b) Discuss the factors that hinder the growth of the private sector in Uganda. (10 marks)

END

NAME.....

.....

INDEX NO.....

S101

General Paper

**HOLIDAY WORK
GENERAL PAPER**

Time: 2 hours 40 minutes

- Answer two questions in all. Choose one question from Section A and one question from Section B.
- You are advised to divide your time equally between the two questions.
- All questions carry equal marks. Additional questions will not be marked.
- Fill in the table below the attempted questions.

S E C T I O N	QT N	MARK
A		
B		
T O T		

A L		
----------------	--	--

SECTION A

*Answer **ONE** question from this Section*

1. Examine the causes of rampant Infant Mortality and suggest practical solutions to alleviate this problem.
2. Describe the measures that can be taken to mitigate the election violence in Uganda' electoral process.
3. How best can we utilize the available natural resources in Uganda for maximum sustainability?
4. How can the government of Uganda achieve sustainable economic development?

SECTION B

*Answer **one** question from this section*

There are five ships at Dare Salam port: they are; the Greek ship, English ship, Brazilian ship, French ship and Spanish ship.

The colours of the ships are: red, green, white, black and blue not in any particular order

The destination ports for the ships are: Said, Genoa, Hamburg, Marseille and Manila

The products carried by the ships are: corn, rice, tea, coffee, and cocoa.

The following information about the ships is scanty known and yet the port authorities wish to guide its clients about the imports and exports through the port:

- The Greek ship leaves at 6:00am and carries coffee
- The ship in the middle has a black chimney
- The English ship leaves at 9:00am
- The French ship with a blue chimney is to the left of a ship that carries coffee
- To the right of the ship carrying cocoa is a ship going to Marseille
- The Brazilian ship is heading for Manila
- Next to the ship carrying rice is a ship with a green chimney
- A ship going to Genoa leaves at five
- The Spanish ship leaves at 10:00am and is to the right of the ship going to Marseille
- The ship with a red chimney goes to Hamburg

- Next to the ship leaving at 10:00am is a ship with a white chimney
- The ship on the border carries corn
- The ship with a black chimney, leaves at 8:00am
- The ship carrying corn is anchored next to the ship carrying rice
- The ship to Hamburg leaves at 6:00am

Note:

- To the right means anywhere on the right side from the given point not only right next to, likewise for the left
- All the ship leave according to their stipulated times and no ship is allowed to carry more than one product

As a way of increasing imports and exports through Dare Salam port, the ports authority has initiated a drive aimed at rewarding the leading users of the port.10,000\$ is up for grabs. The following conditions have been put in place regarding the clients who will benefit from this initiative.

- When distributing the incentive, 15 parts will go to coffee exporter,10 parts to tea,5 parts to cocoa, 3 parts to rice and 2 parts to corn.
- At the port were 100 metric tons of exports

Questions

- a) Make a sailing schedule for the ships [10 marks }
 - b) i) Calculate the tons transported by each of the five ships [5marks }
 - ii) How much will each export receive from the reward {5marks }
 - c) What problems limit water transport in your country { 10 marks }
 - d) Suggest possible solutions to these limitations { 10 marks }
- SPGE { 10 marks }

6.Read the passage below and answer the questions that follow, using your own words wherever possible.

The interconnected nature of economies, cultures, and societies worldwide has **profoundly altered** our world. With seamless flows of goods, capital, and information across borders, its impact touches every facet of our lives,

from commerce and technology to social norms and communication methods.

At its essence, this integration of markets and cross-border exchange of goods, services, and ideas redefine global interactions. Facilitated by advancements in transportation, communication, and technology, this phenomenon accelerates economic, social, and cultural interactions, reshaping our global landscape significantly.

Several factors drive this process, notably technological advancements. The rise of the internet, mobile communication, and digital platforms enables instant communication and global connectivity, facilitating international business operations and consumer access to global products and services. Moreover, the relaxation of trade barriers, financial market **deregulation**, and the emergence of multinational corporations further propel this trend, fostering increased cross-border trade, investment, and capital movement.

Resultantly, this ushers in an era of **unprecedented** economic growth and prosperity, lifting millions from poverty and expanding trade and investment opportunities. By promoting market integration and specialization, it allows countries to exploit comparative advantages, driving efficiency, productivity, and innovation. However, it also brings challenges such as income inequality, job displacement, and **susceptibility** to economic shocks, as workers face global labor market competition, leading to wage stagnation and job insecurity in some sectors.

Cultural exchange is another **hallmark** of this phenomenon, enabling the spread of cultural ideas, values, and traditions globally through media, entertainment, and digital platforms. While it tends to **homogenize** some cultural expressions, it also fosters greater appreciation for cultural

diversity and intercultural dialogue. Nevertheless, concerns arise regarding its impact on local cultures and identities, with traditional practices and languages at risk of marginalization.

Moreover, globalization highlights pressing global challenges transcending national borders, including climate change, environmental degradation, pandemics, and geopolitical instability. Addressing these necessitates collective action and international cooperation. However, the uneven distribution of power and resources impedes progress, emphasizing the need for enhanced international collaboration and **multilateralism**.

In sum, this interconnected world presents both opportunities and challenges. While propelling economic growth, technological advancement, and cultural exchange, it also **exacerbates** inequalities, disrupts traditional livelihoods, and heightens **geopolitical tensions**. Thus, navigating this interconnected world entails harnessing its benefits while addressing its shortcomings, fostering inclusive and sustainable development for all global citizens.

Questions:

a) suggest a suitable title for this passage {2 marks}

b) What according to the author are the primary drivers of interconnected nature of economies?

{6marks}

c) in not more than 100 words, summarize effects of interconnected nature of economies according to the passage {12 marks}

d} Give the meaning of the following words and phrases as used in the passage;

- i. profoundly altered
- ii. At its essence
- iii. Deregulation
- iv. Unprecedented
- v. Susceptibility
- vi. Hallmark
- vii. Homogenize
- viii. multilateralism
- ix. exacerbates
- x. geopolitical tensions

{20 marks}

SPGE

{10marks}

END

= 20m

= 10m

= 50m

@KEN

2m @

SPGE

TOTAL

HOLIDAY WORK
Uganda Advanced Certificate of Education
S.6 GEOGRAPHY
Paper 3

3 hours

INSTRUCTIONS TO CANDIDATES:

- Answer **four** questions in all, **one** question should be taken from section **A** and **three** questions from section **B**.
- Any additional question(s) answered will **NOT** be marked.
- Credit will be given for use of relevant sketch maps, and local examples. Begin each question from a fresh page.

SECTION A: FIELD WORK

*Choose **one** question*

1. For any field work study you carried out on a livestock farm;
 - (a) (i) State the topics of study. (02 marks)
 - (ii) Outline the objectives of the study. (04 marks)
 - (b) Draw an annotated landscape sketch of the area studied and on it mark and name;
 - (i) Relief features
 - (ii) Human features. (08 marks)
 - (c) Explain the factors that have favoured the establishment of the livestock farm. (06 marks)
 - (d) Assess the impact of the livestock farm on the environment in the area studied. (05 marks)

2. For any field work study you carried out as a group or an individual'
 - (a) (i) State the topic of study. (02 marks)
 - (ii) Outline the objectives of the study. (04 marks)
 - (b) How did you achieve the objectives of the study? (09 marks)
 - (c) Explain the problems you faced while collecting information from the field. (04 marks)
 - (d) What conclusions did you draw from the field work study? (06 marks)

SECTION B: UGANDA

Choose **three** questions from this section

3. Account for the variations in rainfall distribution in Uganda. (25 marks)
4. (a) Examine the conditions that have favoured floriculture in Uganda. (15 marks)
(b) Assess the importance of floriculture to the development of Uganda. (10 marks)
5. (a) Account for the low level of development of the power and energy sector in Uganda. (15 marks)
(b) Explain the steps being taken to improve the power and energy sector in Uganda. (25 marks)
6. Assess the importance of eco-tourism to the development of Uganda. (25 marks)
7. (a) Describe the state of water transport in Uganda. (15 marks)
(b) Explain the factors limiting the development of water transport in Uganda. (10 marks)
8. Study the table below showing population growth in Uganda 1969 – 2014 and answer the questions that follow:

CENSUS YEAR	TOTAL POPULATION
1969	9,535,051
1980	12,636,179
1991	16,671,705
2002	24,227,297
2014	34,634,650

Adopted from UBOS statistical Abstract

- (a) (i) Draw a line graph to portray the information in the table. (08 marks)
(ii) Describe the characteristics of Uganda's population. (07 marks)
- (b) Explain the causes of current trend in population growth in Uganda. (10 marks) **END**

S.6
HOLIDAY WORK
EUROPEAN HISTORY 1789-1970
P210/3
TIME: 3 HOURS

INSTRUCTIONS:

- **Answer any four questions.**
- **All questions carry equal marks.**
- **Any additional question answered will not be marked.**

1. How successful were the revolutionaries in achieving their objectives between 1789 and 1799?
(25 marks)
2. Examine the impacts of the downfall of Napoleon on Europe up to 1848.
(25 marks)
3. Discuss the causes and effects of 1830 revolution in Brussels.
(25 marks)
4. “The success of the German unification was rooted in the Prussian militarism”. Discuss.
(25 marks)
5. Discuss the events in the Ottoman Empire that threatened the European peace between 1875 and 1914.
(25 marks)
6. To what extent was the Moroccan crisis of 1906 responsible for the occurrence of the global war of 1914.
(25 marks)
7. Evaluate the weakness of the supra nationalistic Organisation of the inter-war period.
(25 marks)
8. How far was the weakness of the Weimer republic responsible for the rise of Totalitarianism in German by 1933.
(25 marks)
9. “The Anglo-French policy was primarily responsible for the outbreak of World War II of 1939-1945”. Discuss.
(25 marks)
10. “The formation of Para-Militaristic Agency of 1949 was inevitable”. Discuss.
(25 marks)

END

S850/2
Subsidiary
PRACTICAL
Paper
August.2025
2 hours

ICT

2



Uganda Advanced Certificate of Education

SUBSIDIARY ICT

(PRACTICAL)

Paper 2

2 hours

INSTRUCTIONS TO CANDIDATES:

- *This paper is made up of **five** equally weighted questions.*
- *Answer any **three** questions.*
- *Any additional question(s) will **not** be marked*
- *Each candidate is provided with support files in the folder **Support Files** on the Computer Desktop. Use the support files where applicable to supplement the questions.*
- *Candidates should continuous **save** their work.*
- *Each candidate must produce a **hard copy** for each question answered to accompany the **Soft Copy**.*

*Answer any **three** questions in this paper*

T

1. Create a Microsoft word document save it as your name and personal number, in your folder on the desktop.
 - (a) Insert page numbers at the bottom center of the document, and your name on the

bottom left.

(01 mark)

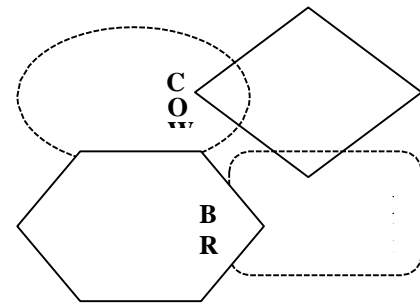
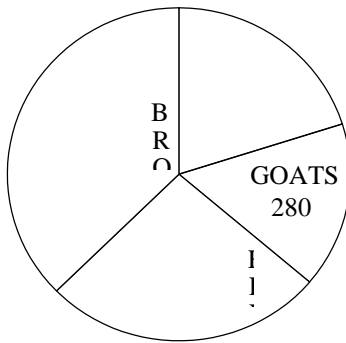
The following is info about the number of Farmer Magiri's animals:

Goats – 350, Cows – 280, Sheep – 460, Broilers – 650

(b) Represent the data in different graphical formats: (e.g. tabular, pie chart, shapes, word art, text box, smart art). Place each object on a different page.

(09 marks)

MAGIRI'S ANIMALS	
Animals	Quantity
COWS	350
GOATS	280
HENS	460
BROILERS	650



(c) Put appropriate captions/labels on each shape

(01 mark)

(d) On page three, below the shapes/smart art, type your name, and insert your email address or Facebook page as a hyperlink and change text direction in the table to vertical only for the Subtitles (Animals and Quantity).

(03 marks)

(e) Change the paper size to A4, and landscape orientation

(02 marks)

(f) In the table explore inserting formulas, and sort data in ascending by Animals.

(02 marks)

(g) Insert any equation and a symbolical formula of your choice on page two

(02 Marks)

2. Create a database for **Jett Car Hire Ltd** saved as **your name number** and carry out the following tasks.

<i>E</i>	<i>S</i>	<i>D</i>	<i>C</i>	<i>E</i>	<i>R</i>
<i>m</i>	<i>e</i>	<i>a</i>	<i>a</i>	<i>m</i>	<i>e</i>
<i>p</i>	<i>x</i>	<i>t</i>	<i>r</i>	<i>p</i>	<i>m</i>
<i>l</i>		<i>e</i>	<i>-</i>	<i>l</i>	<i>a</i>
<i>o</i>		<i>-</i>	<i>T</i>	<i>o</i>	<i>r</i>

<i>y</i> <i>e</i> <i>e</i> – <i>N</i> <i>a</i> <i>m</i> <i>e</i>		<i>o</i> <i>f</i> – <i>B</i> <i>i</i> <i>r</i> <i>t</i> <i>h</i>	<i>y</i> <i>p</i> <i>e</i>	<i>y</i> <i>e</i> <i>e</i> – <i>I</i> <i>D</i>	<i>k</i> <i>s</i>
<i>K</i> <i>a</i> <i>l</i> <i>a</i> <i>m</i> <i>b</i> <i>e</i> <i>D</i> <i>a</i> <i>p</i> <i>h</i> <i>i</i> <i>n</i> <i>e</i>	<i>F</i>	<i>l</i> <i>9</i> <i>8</i> <i>0</i> , <i>l</i> <i>l</i> – <i>l</i> <i>8</i>	<i>P</i> <i>r</i> <i>e</i> <i>m</i> <i>i</i> <i>o</i>	<i>J</i> <i>B</i> <i>C</i> <i>H</i> – <i>2</i> <i>0</i> <i>0</i>	<i>G</i> <i>o</i> <i>o</i> <i>d</i> <i>w</i> <i>o</i> <i>r</i> <i>k</i>
<i>S</i> <i>a</i> <i>n</i> <i>j</i> <i>a</i> <i>y</i> <i>H</i> <i>u</i> <i>s</i> <i>s</i>	<i>M</i>	<i>l</i> <i>9</i> <i>7</i> <i>8</i> , <i>0</i> <i>2</i> – <i>2</i> <i>7</i>	<i>B</i> <i>e</i> <i>n</i> <i>z</i>	<i>J</i> <i>B</i> <i>C</i> <i>H</i> – <i>0</i> <i>1</i> <i>0</i>	

<i>ei</i>					
<i>n</i>					
<i>K</i>	<i>M</i>	<i>1</i>	<i>P</i>	<i>J</i>	<i>E</i>
<i>a</i>		<i>9</i>	<i>r</i>	<i>B</i>	<i>x</i>
<i>p</i>		<i>8</i>	<i>e</i>	<i>C</i>	<i>p</i>
<i>a</i>		<i>4</i>	<i>m</i>	<i>H</i>	<i>e</i>
<i>l</i>		<i>,</i>	<i>i</i>	<i>-</i>	<i>r</i>
<i>a</i>		<i>1</i>	<i>o</i>	<i>0</i>	<i>i</i>
<i>g</i>		<i>0</i>		<i>0</i>	<i>e</i>
<i>a</i>		<i>-</i>		<i>1</i>	<i>n</i>
<i>M</i>		<i>3</i>			<i>c</i>
<i>ic</i>		<i>0</i>			<i>e</i>
<i>h</i>					<i>d</i>
<i>a</i>					
<i>el</i>					
<i>N</i>	<i>F</i>	<i>1</i>	<i>P</i>	<i>J</i>	<i>T</i>
<i>a</i>		<i>9</i>	<i>r</i>	<i>B</i>	<i>i</i>
<i>b</i>		<i>9</i>	<i>e</i>	<i>C</i>	<i>m</i>
<i>u</i>		<i>1</i>	<i>m</i>	<i>H</i>	<i>e</i>
<i>k</i>		<i>,</i>	<i>i</i>	<i>-</i>	<i>k</i>
<i>e</i>		<i>1</i>	<i>o</i>	<i>0</i>	<i>e</i>
<i>r</i>		<i>1</i>		<i>1</i>	<i>e</i>
<i>a</i>		<i>-</i>		<i>9</i>	<i>p</i>
<i>J</i>		<i>3</i>			<i>e</i>
<i>o</i>		<i>0</i>			<i>r</i>
<i>a</i>					
<i>n</i>					
<i>S</i>	<i>M</i>	<i>1</i>	<i>W</i>	<i>J</i>	
<i>e</i>		<i>9</i>	<i>i</i>	<i>B</i>	
<i>n</i>		<i>6</i>	<i>s</i>	<i>C</i>	
<i>t</i>		<i>2</i>	<i>h</i>	<i>H</i>	
<i>o</i>		<i>,</i>		<i>-</i>	

<i>n</i>		<i>0</i>		<i>1</i>	
<i>g</i>		<i>1</i>		<i>8</i>	
<i>o</i>		<i>-</i>		<i>0</i>	
<i>P</i>		<i>1</i>			
<i>h</i>		<i>0</i>			
<i>il</i>					
<i>i</i>					
<i>p</i>					
<i>M</i>	<i>F</i>	<i>1</i>	<i>P</i>	<i>J</i>	<i>C</i>
<i>u</i>		<i>9</i>	<i>r</i>	<i>B</i>	<i>o</i>
<i>w</i>		<i>7</i>	<i>e</i>	<i>C</i>	<i>-</i>
<i>a</i>		<i>3</i>	<i>m</i>	<i>H</i>	<i>o</i>
<i>n</i>		<i>,</i>	<i>i</i>	<i>-</i>	<i>p</i>
<i>g</i>		<i>0</i>	<i>o</i>	<i>1</i>	<i>e</i>
<i>u</i>		<i>4</i>		<i>5</i>	<i>r</i>
<i>zi</i>		<i>-</i>		<i>0</i>	<i>t</i>
<i>V</i>		<i>0</i>			<i>i</i>
<i>iv</i>		<i>1</i>			<i>v</i>
<i>i</i>					<i>e</i>
<i>a</i>					
<i>n</i>					
<i>K</i>	<i>M</i>	<i>1</i>	<i>W</i>	<i>J</i>	<i>E</i>
<i>a</i>		<i>9</i>	<i>i</i>	<i>B</i>	<i>x</i>
<i>t</i>		<i>5</i>	<i>s</i>	<i>C</i>	<i>p</i>
<i>o</i>		<i>0</i>	<i>h</i>	<i>H</i>	<i>e</i>
<i>W</i>		<i>,</i>		<i>-</i>	<i>r</i>
<i>il</i>		<i>0</i>		<i>0</i>	<i>i</i>
<i>li</i>		<i>6</i>		<i>9</i>	<i>e</i>
<i>a</i>		<i>-</i>		<i>0</i>	<i>n</i>
<i>m</i>		<i>0</i>			<i>c</i>
		<i>2</i>			<i>e</i>
					<i>d</i>

<i>W</i>	<i>M</i>	<i>1</i>	<i>B</i>	<i>J</i>	<i>T</i>
<i>a</i>		<i>9</i>	<i>e</i>	<i>B</i>	<i>i</i>
<i>l</i>		<i>9</i>	<i>n</i>	<i>C</i>	<i>m</i>
<i>u</i>		<i>2</i>	<i>z</i>	<i>H</i>	<i>e</i>
<i>g</i>		<i>,</i>		<i>-</i>	<i>k</i>
<i>e</i>		<i>0</i>		<i>0</i>	<i>e</i>
<i>m</i>		<i>6</i>		<i>6</i>	<i>e</i>
<i>b</i>		<i>-</i>		<i>0</i>	<i>p</i>
<i>e</i>		<i>1</i>			<i>e</i>
<i>A</i>		<i>4</i>			<i>r</i>
<i>l</i>					
<i>x</i>					
<i>O</i>	<i>M</i>	<i>1</i>	<i>W</i>	<i>J</i>	<i>E</i>
<i>k</i>		<i>9</i>	<i>i</i>	<i>B</i>	<i>r</i>
<i>el</i>		<i>8</i>	<i>s</i>	<i>C</i>	<i>a</i>
<i>l</i>		<i>2</i>	<i>h</i>	<i>H</i>	<i>t</i>
<i>o</i>		<i>,</i>		<i>-</i>	<i>i</i>
<i>S</i>		<i>0</i>		<i>0</i>	<i>c</i>
<i>te</i>		<i>1</i>		<i>6</i>	
<i>p</i>		<i>-</i>		<i>5</i>	
<i>h</i>		<i>3</i>			
<i>e</i>		<i>1</i>			
<i>n</i>					

Instructions:

- (a). Design a table saved as **drivers** to hold the above data. (02 marks)
- (b). Design a tabular form having a sky-blue background colour, footer of your name you will use to populate the table. Save the form as **Data Entry**. (04 marks)
- (c). Design three queries that will return workers who:
- have no remarks against their records. Save the query as **Not Appraised**. (02 marks)
 - drive Car_Type that is *not a Wish*. Save the query as **Not Wish**. (02 marks)

(iii). celebrate birth day in the month of January. Save the query as **Born Jan**.
(02 marks)

(d). Create a report to return drivers who drive a Premio Car_Type. Save the report as **Premio**.
(02 marks)

(e) Create a report having all the records on one sheet. Save the report as **All**.
(02 marks)

The report should have the following details:

(i). A good red line boarder.
(01 mark)

(ii). Group and sort your records in order of car_type
(01 mark)

(iii). Add a title: **MOTO VEHICLES INFORMATION REPORT** size 24
(01 mark)

(f) Add an image **Motor.png** on your report to serve as a logo
(01 mark)

(g) Print your queries and report only.

3. (a) Using a suitable software package, Load the file **S5 ICT Results.xls** that shows End of Year 2024 Promotional ICT results for S.5 students of Bologna Sec 5. **T** ir name and personal number.
(01 mark)

b) Use a suitable formula to find the marks of students in S850/1 and S850/2 out of 40 and 60 respectively.
(02 marks)

c) Format the titles to appear like the ones below.
(02 marks)

B16									
	A	B	C	D	E	F	G	H	I
1	INDEX	NAME	S850/1 (%)	S850/2 (%)	S850/1 (Out of 40)	S850/1 (Out of 60)	TOTAL	GRADE	POSITION

d) Use a suitable function to calculate find the values of:

(i) Total
(01 mark)

(ii) Grade (a student gets an **O** for total marks 50 and above of **F** for total marks less than 50)
(02 marks)

(iii) Position
(02 marks)

(iv) Second Highest mark in each paper
(02 marks)

(v) Third Lowest mark in each paper
(02 marks)

e) Using the name, S850/2 out of 60 and the percentage marks of both papers, insert an appropriate column graph in a new sheet named Graph.

(03 marks)

(f) Using the above chart convert the S850/2 out of 60 into a line graph. **(02 marks)**

e) Add all borders, your name and personal number as footer on sheet1 and print.

(01 mark)

4. As Educator, the Village Health Team (VHT) of your village invited you to make a presentation about Corona Virus your village Secondary School. Prepare **Five** presentation slides using Ms PowerPoint to deliver your content about Corona (COVID-19) to the school community.

SLIDE 1: Containing topic, Presenter's name, the Village Name, and Date when the Presentation is made

SLIDE 2: Include a sub-title/heading and content bulleted showing a description of how the virus is spread

SLIDE 3: Add a sub-title/heading and content listing symptoms corona virus may experience **T**

SLIDE 4: Use Most Hit Countries with COVID-19 as sub-title and insert a table to represent the data. The table should contain a record of at least 5 countries. Suggested Column heading: Sno.; Country; No. Infected people; Death Cases

SLIDE 5: Insert a sub-title "Ways of preventing spread of COVID-19". Add the images representing means of preventing the spread of the virus **[These images are included in the support files]**

SLIDE 6: Sub-title/heading: Question and Answer

- Insert Muni University Logo in the middle of the slide
- Add your Address [Postal Address; Mobile Number; and Email] after the Logo

Required:

(a) Develop the presentation using the above slides save your work as 'Covid-19' in the folder you created on the desktop.

(05 Marks)

(b) Use Vertical Chevron List SmartArt to present the information in Slide 3 which contains symptoms of a person with corona virus

(03 Marks)

(c) Apply retrospect theme, apply Shrink & Turn animation to the text and slide numbers

(03 Marks)

(d) Let your slides have a fly-in transition effect from top left corner.

(01 Mark)

(e) Insert the current date and your student number as your footer. *(02 Marks)*

(f) Insert Speaker notes in Slide 4 “Uganda Covid-19 Team did a fantastic job of restraining the spread of the virus”

(02 Marks)

(g) Insert on the Slide 1 logo of Muni University at the left bottom part of the slide, and an image of Covid-19 at the right bottom of the slide.

(02 Marks)

(h) Make all Sub-title/heading Font size 50, Font Arial Narrow, Font Color Dark Red, Bold the text, and add Text Shadow.

(02 Marks)

(i) Print all your work on one A4 paper size.

5. Use Desktop publishing software to prepare a brochure for **JK Computer Center** with the following details.

Company Name: JK Computer Center

Motto: Computer skills for better standards.

Location: Seventh Street, Jinja Road

Address: P.O Box 38, Kampala

Telephone Contact: 0775610762, 0701517817, 0758767895

E-mail Address: jkcomputercenter@gmail.com

Website: <https://www.jkcomputer.net>

Introduction: JK Computer Center is a home of computer services and accessories. We have customer centered service providers. Please come and enjoy our excellent services.

Services offered: Internet services, Printing, Photocopying, Scanning, Binding, Mobile Money, Computer and phone repair, Computer and phone accessories, Airtime selling, Telecommunications services, Report writing, Typing and Computer lessons.

- (a) Divide each page into three panels. *(03 marks)*

- (b) Enter the given details in suitable panels. *(08 marks)*
- (c) Use appropriate images, fonts and background in the brochure. *(06 marks)*
- (d) Add your name and personal number as footer. *(01 mark)*
- (e) Save your brochure as your name and personal number. *(01 mark)*
- (f) Print your work. *(01 mark)*

END

Student's Name:

Signature

S850/1
SUBSIDIARY ICT
Paper 1
(Theory)
2025
21/2 hours

Uganda Advanced Certificate Of Education
SUBSIDIARY INFORMATION AND COMMUNICATION
TECHNOLOGY
Paper 1
(Theory)

2 hours 30 minutes

INSTRUCTIONS TO CANDIDATES:

- This paper consists of twenty questions.
- Answer all questions in this paper
- All answers should be written in blue or black ink in the spaces provided.

Questions For Examiner's Use Only

Marks Initials

1-2

3-4

5-6

7-8

9-10

11-12

13-14

15-16

17-18

19-20

Answer all questions in this paper

1. (a) Explain the term Information and Communication Technology. (02 marks)

.....
.....
.....
.....
.....

(b) In modern world, every person is endeavoring to ease access to information. Give three reasons why students in Secondary Schools should not be allowed to have mobile phones.

(05 marks)

(i).....
.....
.....

(ii).....
.....
.....

(iii).....
.....
.....

2. (a) Differentiate between Computer servicing and computer repair (02 marks)

.....
.....
.....
.....
.....
.....

b) Write one reason for having the following items in the computer laboratory

i) Woolen carpet (01 mark)

.....
.....
.....

ii) Blower (01 mark)

.....
.....
.....

iii) CCTV cameras. (01 mark)

.....
.....
.....

3. (a) A student had a file on her laptop and wanted to transfer it to a computer in a laboratory. Give three devices that she can use to transfer the file. (03 marks)

(i).....
.....

(ii).....
.....

(iii).....
.....

(b) Teo’s network access speed is six megabytes per second. How many kilobytes does Teo’s network receive or send per second? (02 marks)

.....
.....
.....
.....
.....

5. During a practical examination students were required to open a blank file and save it as D:\STUDENT WORK\EOT PRACTICAL\safety.doc.

(a) State the name of the immediate subfolder in which students must save the file. (01 mark)

.....
.....

b) Write the root directory onto which the file must be saved. (02 marks)

.....
.....

c) Suggest one example of a computer application the student can use to create the file. (01 mark)

.....
.....

d) State the name of the file represented by the above file path. (01 mark)

.....
.....

5. (a) Explain the following terms in spreadsheet.

(i) Values. (02 marks)

.....
.....
.....

(ii) Labels. (02 marks)

.....
.....
.....

(b) Name a symbol used when writing functions in a spreadsheet. (01 mark)

.....
.....

6. Study the devices and answer questions that follow.

A
B
C

D
E

(a) Name the devices labeled. (03 marks)

A.....
.....
B.....
.....
C.....
.....

(b) Give one major similarity between devices A and E. (01 mark)

.....
.....
.....

(c) Identify one device which can be categorized as an output device. (01 mark)

.....
.....

7. (a) What is multiprocessing? (01 mark)

.....
.....
.....
.....

b) Give two advantages of each of the following Operating systems

i) Windows. (02 marks)

.....
.....
.....
.....

ii) Linux (02 marks)

.....
.....
.....
.....

8. Identify five ICT related employment opportunities in Uganda today (05 marks)

(a).....

.....

(b).....

.....

(c).....

.....

(d).....

.....

(e).....

.....

.....
.....

9. (a) Define the term Motherboard. (02 marks)

.....
.....
.....
.....

(b) Identify any three components housed on the motherboard. (03 marks)

(i).....

.....

(ii).....

.....

(iii).....

...

10. (a) Define the following terms as used in publications.

(i) Frame. (01 mark)

.....
.....
.....
.....

(ii) Template (01 mark)

.....
.....
.....
.....

(b) List any two desktop publication soft wares (02 marks)

(i).....

.....

(ii).....

.....

(c) Name a document that can be produced using publication software. (01 mark)

.....
.....

11. (a) Outline any three threats a System Administrator may face as a result of networking computers. (03 marks)

(i).....
.....

.....
.....

(ii).....
.....

.....
.....

(iii).....
.....

.....
.....

(b) Suggest any two measures that the system administrator can employ to reduce the network threats. (02 marks)

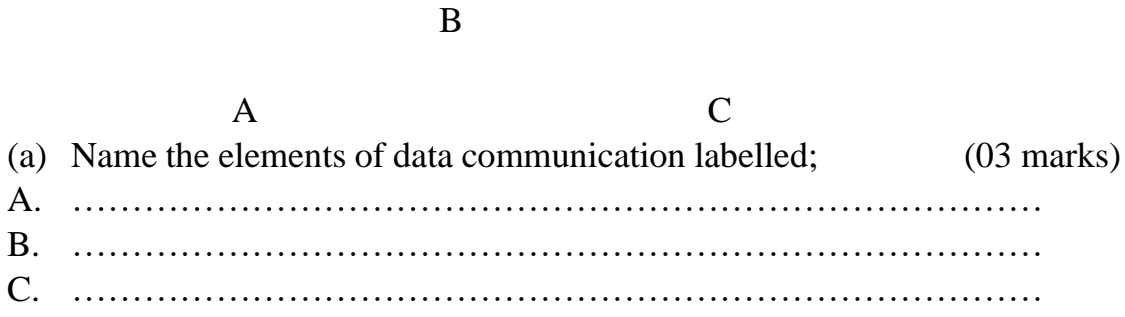
(i).....
.....

.....
.....

(ii).....
.....

.....
.....

12. Study the data communication diagram below and answer the questions that follow:



(a) Name the elements of data communication labelled; (03 marks)
A.
B.
C.

(b) Suggest the devices used to connect A to B. (01 mark)
.....

(c) State the protocol used to uniquely identify A and C. (01 mark)
.....

13. Explain the following as applied to Internet:

(a) Hotspot. (02 marks)

.....
.....
.....

(b) Internet Service Provider. (01 mark)

.....
.....

(c) Search Engine. (02 marks)

.....
.....
.....

14. (a) Give two reasons to justify ownership of institutional websites.

(02 marks)

(i)

.....
.....
.....

(ii)

.....
.....
.....

(b) (i) What is a web browser.

(01 mark)

.....
.....
.....

(ii) Under what circumstances can someone use a Uniform Resource Locator (URL) in a web browser?

(02 marks)

.....
.....
.....
.....

15. The table below shows a worksheet which Nabirye was working on. Use it to answer the questions that follow.

A	B	C	D	E	
1	ID Number	Name	Item 1	Item 2	229.1
2	100000	Akello	990	34	11.8
3	100000	Nambi	660	58	#DIV/O!

4 ##### Busingye 8800 -
5 #NAME?
6

a) (i) Suggest a reason why the entry in cell A4 appeared as shown. (01 mark)

.....
.....
.....

(ii) How do you rectify the error in cell A4? (01 mark)

.....
.....
.....

(iii) What does the error in cell E3 mean? (01 mark)

.....
.....
.....

(iv) How do you correct the error in cell D5? (01 mark)

.....
.....
.....

16. Read the statement below and write the words TRUE or FALSE in the spaces provided. (05 marks)

STATEMENT TRUE/FALSE

- (a) Machine code is one of the level computer languages.
- (b) Microsoft is the only operating system in use in Uganda
- (c) WINZIP is an example of system software which reduces the actual size of a file
- (d) A student delivering a presentation would need an LCD projector and laptop.
- (e) Screen savers can be categorized as desktop publishing software since they can be used for advertising purposes.

17. (a) Give two situations under which electronic presentations would be used.

(02 marks)

(i).....
.....

.....(ii).....
.....

.....
.....

(b) State three advantages of using electronic presentations over the traditional chalk and talk. (03 marks)

(i).....
.....
.....

(ii).....
.....
.....

(iii).....
.....
.....

18. (a) Distinguish between hyperlink and homepage. (02 marks)

.....
.....
.....
.....

(b) Identify three netiquette guidelines while using the internet. (03 marks)

(i).....
.....
.....

(ii).....
.....
.....

(iii).....
.....
.....

19. (a) Give any two services that use Electronic payment (E-payment) method.

(02

marks)

(i)

.....
.....

(ii)

.....
.....

(b) State three advantages of using E-payments over traditional methods.

(03

marks)

(i)

.....
.....
.....

(ii)

.....
.....
.....

(iii)

.....
.....
.....

20. Using the email address:annet@gmail.com, identify what these parts stand for.

(a)annet.

(01 mark)

.....
.....

(b) @ .

(01 mark)

.....
.....

(c)gmail

(01 mark)

.....
.....

(d) .com

(02 marks)

.....
.....
.....

HOLIDAY WORK
SENIOR SIX
INTERNAL MOCKS
ISLAMIC RELIGIOUS EDUCATION PAPER III
TIME: 1 HOUR AND 30 MINUTES

INSTRUCTIONS

- Attempt any four questions

- 1. Examine the way Islam reacted to the oppressive tendencies against women and slaves during the Jahiliyyah days (25 marks)

- 2. (a) Discuss the nature of prophet Muhammad's mission (pbuh) (13 marks)
(b) Explain the factors behind his success (12 marks)

- 3. a) Discuss the attempt by Caliph Abubaker to restore calm to the Muslim community 632 – 634 AD (15 marks)
b) What lessons can Muslim leaders learn from Abubaker's attempt to restore peace in the Muslim community (10 marks)

- 4. To what extent did the character of Yazid I Bin Muawiyah undermine the survival of the Umayyad Dynasty? (25 marks)

- 5. Despite the weaknesses of some Umayyad caliphs, the Umayyad state remained fundamentally strong. Discuss (25 marks)

- 6. "the Augustus age of Islamic civilisation". How fitting to the Abbasid caliphate? (25 marks)

- 7. To what extent was the vastness of the Abbasid dynasty responsible for the downfall of this dynasty? (25 marks)

- 8. To what extent did the prior preparation of the Fatimids contribute to the establishment of this dynasty? (25 marks)

- 9. How far did the weakness of the Fatimid Caliphs contribute to the downfall of this dynasty? (25 marks)

- 10. To what extent did the conflicting objectives of the crusaders undermine their mission to the Middle East? (25 marks)

11.Examine the factors behind the establishment of the safavid empire
(25 marks)

12.Compare the political organization of the Ottoman Empire with that of the
Abassid dynasty (25 marks)

END

HOLIDAY WORK
SENIOR SIX
INTERNAL MOCKS
ISLAMIC RELIGIOUS EDUCATION PAPER III
TIME: 1 HOUR AND 30 MINUTES

INSTRUCTIONS

- Attempt any four questions
13. Examine the way Islam reacted to the oppressive tendencies against women and slaves during the Jahiliyyah days (25 marks)
14. (a) Discuss the nature of prophet Muhammad's mission (pbuh) (13 marks)
(b) Explain the factors behind his success (12 marks)
15. a) Discuss the attempt by Caliph Abubaker to restore calm to the Muslim community 632 – 634 AD (15 marks)
b) What lessons can Muslim leaders learn from Abubaker's attempt to restore peace in the Muslim community (10 marks)
16. To what extent did the character of Yazid I Bin Mawiyah undermine the survival of the Umayyad Dynasty? (25 marks)
17. Despite the weaknesses of some Umayyad caliphs, the Umayyad state remained fundamentally strong. Discuss (25 marks)
18. "The Augustus age of Islamic civilisation". How fitting to the Abbasid caliphate? (25 marks)
19. To what extent was the vastness of the Abbasid dynasty responsible for the downfall of this dynasty? (25 marks)
20. To what extent did the prior preparation of the Fatimids contribute to the establishment of this dynasty? (25 marks)
21. How far did the weakness of the Fatimid Caliphs contribute to the downfall of this dynasty? (25 marks)
22. To what extent did the conflicting objectives of the crusaders undermine their mission to the Middle East? (25 marks)
23. Examine the factors behind the establishment of the Safavid empire (25 marks)

24. Compare the political organization of the Ottoman Empire with that of the Abassid dynasty (25 marks)

END

P320/1

FASIHI YA KISWAHILI

Nathari na Ushairi

Karatasi ya Kwanza

Saa 3

Julai./Agosti

2025

Uganda Advanced Certificate of Education

FASIHI YA KISWAHILI

(Nathari na Ushairi)

Karatasi ya Kwanza

Saa Tatu

MAAGIZO KWA WATAHINIWA:

Karatasi hii ina sehemu tatu: A, B na CH. Mtahiniwa anapaswa kujibu sehemu zote.

Katika sehemu CH, mtahiniwa achague diwani moja tu.

SEHEMU A: UFAHAMU

1. Soma taarifa ifuatayo kisha ujibu maswali yatakayofuata.

Nchi takribani zote za kiasia hutegemea kilimo. Ni dhahiri shahiri kwamba kilimo ni uti wa mgongo wa sisi watu weusi. Kwa myaka mingi sana imejulikana kuwa uchumi wa nchi unakuzwa zaidi na wakulima wetu shambani. Kwa asilimia kubwa, wanawake ndio wanaojitua mhangano kufanya mambo mengi kutwa nzima. Kwa kuwa mfumo wao wa kufanya kazi ni huohuo siku nenda siku rudi, matokeo ya juhudi zao huwa ni ya kadiri tu, lakini ni yenye kunufaisha nchi nzima.

Hebu tumwagalie mwanamke wa wastani katika jamii ya kawaida ya mwaafrika pamoja na shughuli zake za siku nzima na hata kwa mwezi na mwaka. Mwanamke hufanya kazi wakati wote. Kila uchao huwa mbioni akijitahidi kutekeleza majukumu yake. Kazi za mwanamke zinakadiriwa kuchukua saa kama kumi na sita kila siku hata akilala usiku ni kujibwaga tu kitandani kama mzigo mzito. Jambo la kushangaza ni kwamba mwanamke huyo hanung'unikii hali hii na kushindana na wanaume bali huichukuwa kuwa wajibu wake. Tangu jadi, nyanya zetu huamini kuwa ni majaliwa yao kutekeleza huduma na kazi mbalimbali mithili ya punda. Kwa hivyo, wanawake hutenda shughuli wao karibu zote kwa hiari na mapenzi yao. Wao hunuia kufanya kazi vizuri zaidi na zaidi kila wakati na kwa hivyo huzalisha mali zaidi.

Wengi wa akina mama hawa huamka saa kumi na moja alfajiri kutengeneza kiamsha kinywa au kupasha mtoto kiporo, kunadhifisha viunga vyao, kukama ngo'mbe (kama wanao) na kutayarisha mifugo tayari kwa mchungaji kuipeleka malishoni. Kama mifugo si ya kupeleka malishoni, kina mama hao hutafuta majani ya mifugo hiyo. Baada ya shughuli hizo, wao huenda shambani ambapo hulima na kupanda au kupalilia na kuvuna. Baada ya kujiona wamechoka kulima, huenda kutafuta kitu cha kurudi nacho nyumbani. Huenda kuchuma mboga za majani au kutafuta vijikuni au kubeba chochote walichovuna. Mabwana wengine huwa

shambani pamoja na wake zao, lakini hawahusiki sana katika kazi hizo za kubeba kuni au kutafuta mboga.

Wanawake wanaporudi kutoka kondeni kama hawana maji huenda kuteka maji. Aghalabu huwabidi kuenda mbali kuteka maji, maana vijijini hakuna mifereji ya mabomba na visima, mabwawa, maziwa na mito iko mbali na vijiji. Wakishapata maji hupika na baada ya kula chakula huenda wakafikiria habari ya kufua nguo, na kisha kutengeneza chajio, yaani chakula cha jioni. Kama kuna kuuza maziwa ba bidhaa nyingine mwanamke huyu atapanga ya mauzo. Kichwa cha mama huyu huzalisha mambo mengi ya kukuza uchumi. Kila watembeapo utawaona kila wakati wamo mbioni wakifanya mambo ya kujiinua kiuchumi.

Hebu mchunguze mama anayerudi kutoka shambani na mgongoni huenda akawa amebeba mtoto pamoja na kiondo kilichojaa chakula na pengine ni mja-mzito anashona Sweta la mtoto au mumewe; akilini anafikiria jinsi atakavyolisha familia yake. Wanawake aina hii hutenda kazi mithili ya mchwa. Hawachoki na kila siku huwa kiguu na njia kufanya kazi wazipatazo na wazimuduzo. Kama mtu mjuzi wa uchumi akifanya hesabu ya kazi na pesa zinazotokana na juhudi hizi ataona huenda wanawake hao hufanya kazi zinazoingiza shilingi 500 kwa siku.

Katika hali kama hii hatuna budi kuona kwamba wanawake hulemewa na mizigo mikubwa mikubwa na hatimaye kunyonya damu na nguvu zao na kuifanya miili yao na kuzeeka haraka haraka.

Tukikumbuka umuhimu wa wanawake katika jamii, mbali na ule wa kuwa wabeba mimba, wazazi na walezi wa watoto wetu, mwanamke ni mwenzi na msuhuba kwa mwanamume na ni sehemu muhimu ya nguvu-kazi inayoaminika katika kuleta na kukuza maendeleo ya jamii zetu. Pia tuisahau wingi wao mbali na uhodari, juhudi na maarifa waliyo nayo. Katika hali kama hii taifa lolote lile lina jukumu kubwa sana la kukumbuka, kuheshimu na kulinda kazi za wanawake kuishi kibinadamu.

Ili kufikia lengo hili, haitoshi kuzungumza na kuropoka kwenye vyombo vya habari, linalohitajika ni kuelimisha umma, kike kwa kiume. Waelimishwe wanawake kwa sababu wengi wamelemaa na kuvia kudhani kwamba hali zao ni za majaliwa na kwamba yote magumu watendayo ni wajibu kwao. Pia ipo haja ya kuwaelimisha wanaume kujua kipimo cha usumbufu wa mwanamke; na si kipimo cha usumbufu wao tu, bali kipimo cha utu, ushuba na wapenzi wao na kisha wajibu wa pande mbili; kiukeni na kuumeni. Wanaume wengi hawatambui hayo, wanahisi kwamba nafasi ya mwanamke katika jamii ni kuzaa na kujukuu, kupika na kupakua, kufua na kupiga pasi, kusafisha na kufuta, kulima na kuvuna – basi! Pengine heshima anayopewa mwanamke ni ile ya kutekwa kisaikolojia; yaani kusifiwa kiuzuri, kimavazi na kulindwa kwa wivu na uchungu. Wakati utakapofika ambapo wanawake na wanaume watakuwa wameelimishwa na kuelimika ndipo kila upande utakapofahamu wajibu na upasao wa kuishi kimasikilizano, mshikamano na maendeleo mengi yatapatikana humu nchini na kote barani Afrika.

Maswali

- a) Kulingana na taarifa hii, kwa nini kilimo ndicho uti wa mgongo wa nchi nyingi za kiasia?
(alama 4)
- b) Eleza mambo yanayomkabili mwanamke katika hali ya usumbufu. (alama 6)
- c) Mwandishi anatoa mapendekezo yapi ili kutatua shida za mwanamke? (alama 6)
- d) Kwa mujibu wa taarifa hii, wanaume wana mitazamo ipi juu ya wanawake?
(alama 6)
- e) Kulingana na taarifa hii, wanawake katika jamii zetu hutoa huduma zipi?
(alama 5)
- f) Eleza maana ya maneno haya kama yalivyotumiwa katika taarifa. (alama 6)

- I) Kutenda kazi mithili ya punda.
- II) Kujitoa mhanga.
- III) Kilimo ni uti wa mgongo.

SEHEMU B: NATHARI

2. Soma chopoleo lifuatayo kisha ujibu maswali yatakayofuata.

Hapo zamani za kale, baada ya kuumbwa ulimwengu na vyote vilivyomo ndani mwake, Mungu alifikiria sana juu ya uhai wa binadamu. Akawa anatatizika katika kuamua iwapo wanadamu wangeishi milele bila kufa kama yeye, au wafe baada ya kuishi ulimwengu kwa muda. Hatimaye, akawatuma wajumbe wawili kuwaambia wanadamu wafanye uamuzi wao wenyewe kuhusu jambo hilo. Kwanza, akamtuma Kinyonga na kumpa ujumbe huu: “mmeambiwa msizaane. Mbaki nyinyi wawili tu ulimwenguni: mke na mume, msife milele na milele.” Kinyonga akaupokea ujumbe na kuelekea ardhini. Kisha Mungu, nyuma yake, akamtuma Njiwa na ujumbe huu: “Mmeambiwa, mkitaka mzaane, kisha mfe. Mkifa, uhai utaendelezwa na watoto, wajukuu, vitukuu, vilembwe ba vilembwekeza wenu. Kwa jinsi hiyo, ijapokuwa nyinyi wenyewe mtakufa, uhai utaishi duniani. Utadumishwa na hao mtakaozaa na watakaozaliwa nao. Nyinyi mtakumbukwa milele na mKinyonga, kama itakavyokumbukwa alitumwa yeye mbele. Lakini kwa sababu ya mwendo wake wa mbele na nyuma, akafika wakati sawa na Njiwa. Akaanza kutoa ujumbe wake ambao, japo ulikuwa mfupi, hakuuwasilisha kwa haraka kwa sababu jambo la kwabza, yeye aligugumiza. Tena, alirudiarudia maneno kiasi cha kuchosha. Hivyo basi, wanadamu walipoona Kinyonga anachelewa kuuwasilisha kwa haraka ujumbe wa Mungu, wakamchekea kwa kumchekea. Kisha wakamwambia Njiwa atoe ujumbe wake kabla ya Kinyonga kufanikiwa kufanya hivyo. Chapuchapu, Njiwa akatoa

ujumbe wake, japo ulikuwa mrefu. Wakausikiliza kwa makini. Wakaona ujumbe mzuri, wakaukubali.

Walipoukubali tu, Kinyonga naye akahitimisha ujumbe wake. Huo wakauona mzuri zaidi, na hivyo wakataka kubadilisha uamuzi wao. Hapo, sauti ya Mungu ikasikika ikisema kwamba kubadilisha hakuwezekani; tayari alikuwa amekwishapokea uamuzi wao na akaukubali. Walipotaka kuuliza maswali, sauti hiyo ikatoweka ghafla. Ikawa sasa ni kujilaunu wenyewe na kuwalaumu wale wajumbe wawili, hasa Kinyonga, kwa kigugumizi chake na mwendo wake wa polepole. Hata hivyo, lawama zao hazikufua dafu. Kikomo chao kikawa kimeshafungwa. Wakawa hawana budi kuzaana na kufa.

Maswali:

- a) Hadithi hii ni ya aina gani? Toa ithibati ya jibu lako. (alama 3)
- b) Kwa mujibu wa hadithi nzima, eleza sifa za mhusika Kinyonga. (alama 4)
- c) Taja na ueleze mbinu za kisanaa zinazopatikana kwenye hadithi hii. (alama 6)
- d) Fafanua muundo wa hadithi hii. (alama 6)
- e) Chambua mtindo wa hadithi kama ulivyobainishwa na mwandishi. (alama 6)
- f) Tamathali ya semi ya *Tashihisi* imejutikezaje katika hadithi hii? Eleza kwa kutoa mifano. (alama 3)
- g) Eleza maudhui yanayojitokeza katika hadithi hii. (alama 5).

SEHEMU CH: USHAIRI

MALENGA WA ZIWA KUU: Wallah Bin Wallah

3. Soma shairi lifuatalo kasha ujibu maswali yatakayofuata.

SUMU YA NDOA

Wengi nimewasikia, na lawama forifori
Wake wamewakimbia, unyumba kunghari
Wanapita wakilia, nikaha zina dosari
Na mwenzio kuachana, ni sumu kubwa ya ndowa

Ndoa hutaka radhia, na tabia ziwer nzuri
Wawili kufurahia, kupeana mashauri
Fujo ikiwatokea, asiwepo mjeuri
Kutokuamimana, Si sumu kubwa ya ndoa

Ndoa mbaya natubia, Madharau yakijiri
Mkeo kumringia, au mume kumwadhiri
Kumuona ni ghasia, mwenzi wako kwa kiburi
Kutokuthaminiama, ni sumu kubwa ya ndoa.

Kaeni na kutulia, maisha yawe ya shuari
Mitazame dunia, vita vilovyokithiri
Vita havina fidia, kupigana na harati
Nyumba bila kupendana, ni sumu kubwa ya ndoa

Kosa laweza tukia, hata likazua shari
Muoja kujinunia, kunena akaghairi
Kwenye pendo la murua, samahani ndiyo heri
Nyumba kununiana ni sumu kubwa ya ndoa

Sote tunayasikia na kuyaona dhahiri
Matatizo ya dumia, kila nchi huhubiri

Tama zikipungua, maisha huwa mazuri
Kutaka kiso maana, ni sumu kubwa ya ndoa.

Mume mke ni mana, tena pambo la kahari
Waishi pamwe kwa nia, kuondolea dosari
Waongeze jumuiia, wana bora kwenye mbari
Kutosikilizana, ni sumu kubwa ya ndoa.

Maswali

- (a) *Eleza ujimbe wa shairi hili* (Alama 08)
(b) *Onyesha uhuru wa kishairi katika shairi hili* (Alama 08)
(c) *Fafama aina tatu za taswira kwa kuvejelea shairi hili* (Alama 06)
(d) *Eleza toni ya shairi hili* (Alama 03)
(e) *Andika ubeti wa tatu na wa saba katika lugha ya nathari* (Alama 08)

4. Soma shairi lifuatalo kasha ujibu wali yatakayofuata:

UTAMADUNI

Ndugu zangu wasifika, nimefika uwanjani
Mzigo nimejitwika, niutue hadharani
Nitantaze kwa haraka, sifa za utamaduni
Utamaduni shikeni, kielelezo cha jadi

Utamaduni muhimu, kwayo maisha juweni
Hufanya mambo yadumu, hadi siku za usoni
Haifai kushutumumu, chombo hiki asilani
Utamaduni shikeni, kielelezo cha jadi

Utamaduni msingi, wa jadi zetu jamani

Faida zake ni nyingi, na muhimu maishani
Huleta sifa kwa wingi, kwa watu wenye imani
Utamaduni shikeni, kielelezo cha jadi

Ni ishara mathubuti, ya kueleza undani
Na ndicho chombo thabiti, kielezacho u nani
Tukakitunze kwa dhati, kwa mapenzi na imani
Utamaduni shikeni, kielelezo cha jadi

Hufanana na ramani, kueleza masikani
Hutumika ugenini, kujieleza baini
Tangu China na Japani, tamaduni wathamini
Utamaduni shikeni, kielelezo cha jadi

‘Tamaduni ni jumla, ya mambo yote ya ndani
Mifano yake ni mila, desturi na imani
Hayo yote kwa jumla, ndo hasa utamaduni
Utamaduni shikeni, kielelezo cha jadi

Elimu lugha sharia, sanaa ngoma na dini
Ndiyo mambo asilia, yaitwayo tamaduni
Na mtu kuyasusia, amepotoka juweni
Utamaduni shikeni, kielelezo cha jadi

Maswali:

- a) *Chambua mtindo wa shairi hili.* (alama 12)
b) *Eleza ujumbe unaojitokeza katika shairi.* (alama 08)
c) *Jadili umuhimu wa utamaduni kulingana na mshairi huyo.* (alama 06)

MALENGA WA KARNE MOJA: Shihabdin Chiraghdin

5. Soma shairi lifuatalo kasha ujibu maswali

Negemea wangu binti, wala situkue dhana
Mchachefu wa sanati, kwa mambo usoyaona
Upulike wasiati, na kwamba ni kunong`ona
Asa ukazingatia, tahadhari
Mama uwe na adabu, sandamane na wayinga
Na ulimi wa thawabu, wasoyua kuitunga
Uwe kitu mahabubu, ziumbe wasio change
Kula utakapongia, wata kuwakurubia

Mwanangu uwe sadiki, na awe radhi mumeo
Ushikalo ulithiki, siku zote mukaao
Mtu asoshika haki, siku akhitariwao
Sandamane nae ndia, awe radhi mekuwia

Yifanye mteshiteshi, keti naye kwa adabu
Kwa maneno yaso ghashi, usimtie ghadhabu
Wala sifanye ubishi, akinena simjibu
Watu wakakutukia, yitahidi kunyamaa

Enda naye kwa imani, nawe ipambe libasi
Atakalo simukhini, ukae kama arusi
We naye sikindane ni, maguu tia kungisi

Mkindani huumia, na mikononi makowa

Kitoka agana naye, mausio ya mvuli
Kingie mkongowee, Allah Allah yaamili
Kisa umtandikiye, na nduguzo na ahali
Mahala pa kupumua, wapende nakuusia

Mtunde kama kijana, uwaonapo sahibu
Asoyayua kunena, ambao wakunasibu
Kitu changalie sana, wakikwambia karibu
Kitokacho na kungia, angusa kukurubia

Mwanangu siwe mkoo, akupendao mpende
Tenda kama uona, akuizao mwenende
Kupea na kosha choo, kwa zema mvundevunde
Si dharau mara moya, la`ala akarindhiya

Na kowa na kuisinga, na ayapo mahitaji
Na nyee zako kufunga, mama, kwako simuhuji
Na asimini kutunga, kwa uwezalo mbuji
Na firashani kutia, angusa kumtendeya

Maswali:

- a) *Chambua muundo wa shairi hili.* (alama 07)
- b) *Jadili ujumbe unaojitokeza katika shairi hili.* (alama 08)
- c) *Toa mifano ya lahaja katika shairi hili.* (alama 07)
- d) *Shairi hili linakufunza nini?* (alama 08)
- e) *Eleza hisia ya mshairi.* (alama 04)

6. Soma shairi hili kasha jibu maswali yatakayofuata.

BAADA DHIKI FARAJA

Kwaheri mwana kwaheri, nenda zangu ngezi-maji
Nimeazimu safari, kwa pepo za malejeji
Kwa mlenge na shuwari, natawakali mpaji
Baada dhiki faraji, hakuna lisibokuwa

Baada dhiku faraji, wasemi wasemaho
Nasafiria kwa mbiji, yenye kamba na uwao
Nitafika viongozi, na twaka ndiyo makao
Muombe mwenzamkwao, hakuna lisilokuwa

Muombe mwenzamkwao, mpa wema waovu
Atupe tutashileo, kutupaswi si mapevu
Atupe kula nguo, kwa uwezowe na nguvu
Atuondolee utovu, hakuna lisilokuwa

Atuondolee utovu, wajawe tumashakani
Tusione uemevu, wa ukata duniani
Zipaate nyoyo utuvu, zisiwaze la kutamani
Mambo pia kwa manani, hakuna lisilokuwa

Mambo pia kwa manani, Fikuri uzingatile
Ondoa hamu moyoni, ujingani usingile
Tutatoka sumbukoni, tusumbukalo milele
Si male kwake si male, hakuna lisilokuwa

Si male kwake si male, mawe wata kusirani
Matungu uvumilile, tuome mola manani
Nedako nisikwile, nirejee autani
Iwe urembo na shkani, hakuna lisilokuwa

Iwe wembo na shani, mola apendapo huwa
Atuondolee huzuni, na mwenye ndwele kupowa
Na huu umasikini, si ila wala tuwa
Aweza kuuondoa, hakuna lisilokuwa.

Maswali:

- (a) *Chambua sura ya shairi hili* (Alama 08)
(b) *Fafanua ujumbe unaojitokeza katika shahili* (Alama 08)
(c) *Mwandishi wa shairi ametumiaje uhuru wa mshairi* (Alama 06)
(d) *Fafanua maana ya anwani ya shairi hili* (Alama 02)
(e) *Kwa kurejelwa shairi elezea maana ya:*
(i) *Mloto*
(ii) *Arudhi* (Alama 06)
(f) *Eleza hisia unazopata kutoka shairi hili* (Alama 04)

MWISHO

P320/2
FASIHI YAKISWAHILI
Karatasi ya Pili
Tamthilia
Julai/Agosti 2025

Uganda Advanced Certificate of Education
Fasihi ya Kiswahili
Karatasi ya pili
Tamthilia
Saa 3

MAAGIZO KWA WATAHINIWA.

Karatasi hii ina Sehemu nne; A, B, CH na D. Mtahiniwa anapaswa kujibu maswali matatu kwa Jumla: Swali moja lazima litoke sehemu D na mengine mawili yachaguliwe kutoka sehemu A, B na CH.

Mtahiniwa asichague maswali zaidi ya moja kutoka sehemu moja.

SEHEMU A

MFALME EDIPODE : Sofokile.

1. (a) Wahenga walisema, “Kudra ya Mungu haikosi na jitihada haiondoi kudra”. Fafanua maana na ukweli wa kauli hiyo ukirejelea tamthilia ya mfalme edipode. *(alama 17)*

(b) Kwa kutoa mifano mwafaka, Eleza jinsi laana ilivyomwathiri Edipode, familia yake na jamii nzima katika tamthilia ya Mfalme Edipode.

(alama 16)

2. (a) Jadili hulka za wahusika wafuatao kama wanavyojitokeza katika tamthilia ya Mfalme Edipode. *(alama 33)*

i) Edipode

ii) Teresia

iii) Jokasta

MABEPARI WA VENISI: William Shakespeare.

3. (a) Linganisha visa na vitendo vinavyotendeka katika tamthilia ya mabepari wa venisi na vinavyotendeka katika nchi yako. *(alama 16)*

(b) Jadili mbinu za uandishi zinazotumiwa na mwandiishi kwa kuwasilisha ujumbe katika tamthilia ya mabepari wa venisi na William Shakespeare. *(alama 17)*

4. (a) Jadili maudhui yanayozungumziwa na mwandishi katika tamthilia ya Mabepari wa Venisi. *(alama 17)*

(b) Eleza mafunzo unayoyapata unaposoma tamthilia hii. *(alama 16)*

SEHEMU B.

TIMOTHY AREGE:*Kijiba cha Moyo.*

1. a. Wahusika katika tamthilia ya Kijiba cha Moyo wanapitia changamoto nyingi sana katika maisha yao ya kila siku. Thibitisha ukweli wa kauli hii ukirejelea tamthilia yenyewe. (alama 17)
- b. Jadili jinsi ukoloni mamboleo ilivyoathiri mataifa mengi katika Bara la Afrika. (alama 16)
6. Mwandishi wa tamthilia ya Kijiba cha moyo ameipamba kazi yake kwa kutumia fani za lugha na mbinu za sanaa. Tetea ukweli wa dai hili kwa kutoa mifano kitabuni. (alama 33)

SAID A. MOHAMED:*Kimya Kimya Kimya.*

7. a) Jadili matatizo ambayo yameikumba nchi katika tamthilia ya Kimya Kimya Kimya. (alama 17)
- b) Mhusika Mpya ni mfano mzuri wa kuigwa na wanamapinduzi wengi barani Afrika. Thibitisha ukweli wa kauli hii ukirejelea tamthilia ya Kimya Kimya Kimya. (alama 16)
8. a) Bwana Binafsi hastahili kuwa kiongozi katika jamii kwa sababu uongozi wake umekosa muelekeo bora. Jadili kwa kutoa mifano ukweli wa dai hili. (alama 17)
- b) jadili athari ya uongozi mbaya katika jamii yako. (alama 16)

SEHEMU CH.

JOHN RUGANDA:*Mizigo*

9. KAIJA: Lakini, mama tumepazoea pahali hapa.
TINKA: Ninafahamu.Ninafahamu sana. Si makosa yangu.
Wakija kufahamu haya, hakuna atakayenilaumu.
KAIJA: Kulitokea nini, mama?
TINKA: Nanyi mtakapokua mkumbuke kuwa nilisema
Ninayajutia. Nisingeweza kuvumilia zaidi.

(Tinka analia kwa sauti ya chini)

KAIJA: Mama kulitokea nini?

NYAKAKE: Ni nini, mama?

TINKA: Msiniulize maswali. Mtanitia kichaa.

KAIJA: Usiwe na shaka mama, tueleze tu.

TINKA: Mungu wangu! Nimekosa nini? Nimekosa nini?

KAIJA: Tuamini, mama. Hivi, huwezi kutuamini?

NYAKAKE: Kulitokea nini?

TINKA: Watakuwa wema kwenu, wanangu wapendwa.

Watawatunza vizuri huko katika makao ya watoto
mayatima.

KAIJA NA

NYAKAKE: Makao ya watoto mayatima!

TINKA: Ikiwezekana nitakuwa nikija kuwatembelea.

NYAKAKE: Maskini baba. Baba yuko wapi? Baba, baba.

TINKA: Ameenda kwenye mazishi....ameenda, amenda na
hatutamwona tena. Ametupa mkono.

KAIJA: Sikilizeni.

Maswali:

- a) Liweke dondoo hili katika muktadha wake. (alama 08)
- b) Jadili ujumbe unaojitokeza katika dondoo hili. (alama 08)
- c) Fafanua fani za lugha zinazojitokeza katika dondoo hili. (alama 08)
- d) Ni hisia gani zinazojitokeza katika dondoo hili? (alama 04)
- e) Jadili hulka ya wahusika wanaozungumza katika dondoo hili. (alama 06)

MASEREKA LEVI KAHAIKA: Mkwamo.

10.KASUKU: Sasa wenzetu wametusaliti, kidimbwi wameachilia

Bogabuga kote tumekwisha, bali n'tapigana mpaka mwisho.
Naskia amekodi wamanuba, twaumizana. Ya wavaa kasiki
tumesahau nakumbuka hapo awali, Bupomboli kilikuwa
kituo chetu cha biashara. Seko namuru na Padilanga vilikuwa
vituo vya kubadilishana mazao na chumvi kutoka Katwe
tulifurahi Wasulenge, Wadiliko wa budilikilo nao walishuhudia
muamala kamili sote kujuliana, sasa twaumana kipanzi.
Lakini subiri, mtego wa panya ni kwa waliomo na wasiomo
Nami wa mukidi babu, kutamauka nimeshakufa ni ahadi
Nimeshaitoa kwa hivyo ewe jemedari uliye bora fanya hima
Kimbia kilimani kawambie wapiganaji huko.....wasilale kamwe,
Wanawake wetu wamejiunga, Kasikinya hapa amepatuliza,
Ni shujaa hapa amepatuliza nami sina wasi.
Haya enenda Yarwa mpole.

KASIKINYA: Jana usiku kucha tumelinda kule chini kidimbwini walioko nao

Hawakutambua.

Ningewavamia lakini walikuwa wengi: wengi kiasi cha

Kutumeza wazima bali kwa hila.

Nikawapotosha kutafuta njia kuelekea marujubu nikawelekeza

Sehemu mbali na hapa pa Waruzi.

Nyuma wakageuka kudhani wamepotea. Kwa sasa

Wanawake wetu shujaa waende punde huko kidimbwini.

Maswali:

- a) Ni kipi kinachoendelea katika dondoo hili? (alama 06)
- b) Jadili ujumbe unaojitokeza katika dondoo hili. (alama 08)
- c) Taja sifa za wahusika wanaozungumza. (alama 06)
- d) Jadili mandhari yanayojitokeza katika dondoo hili. (alama 08)

e) Fafanua fani za lugha zinazojitokeza katika dondoo hili. (alama 06)

SEHEMU D.

ALAMIN MAZRUI:*Kilio cha Haki.*

11. Anwani ya tamthilia ya Kilio cha Haki inakisi yaliyomo. Tetea ukweli wa dai hili ukirejelea tamthilia yenyewe. (alama 33)

12. a) Jadili hadhi ya mwanamke kama anavyojitokeza katika tamthilia ya Kilio cha haki. (alama 17)

b) Unamlinganishaje mhusika lamina na wanawake katika jamii yako? (alama 16)

INNOCENT AGUME:*Chema Chajiuza.*

13. a) Jadili hulka ya wahusika wafuatao:

i. Kunihira. (alama 11)

ii. Kwatampola. (alama 11)

iii. Bakehena. (alama 11)

14. Mwandishi wa tamthilia hii aliisuka ikasukika. Jadili kwa kutoa mifano. (alama 33)

MWISHO.

P320/2
FASIHI YAKISWAHILI
Karatasi ya Pili
Tamthilia
Julai/Agosti 2025

Uganda Advanced Certificate of Education
Fasihi ya Kiswahili
Karatasi ya pili
Tamthilia
Saa 3

MAAGIZO KWA WATAHINIWA.

Karatasi hii ina Sehemu nne; A, B, CH na D. Mtahiniwa anapaswa kujibu maswali matatu kwa Jumla: Swali moja lazima litoke sehemu D na mengine mawili yachaguliwe kutoka sehemu A, B na CH.

Mtahiniwa asichague maswali zaidi ya moja kutoka sehemu moja.

SEHEMU A

MFALME EDIPODE : Sofokile.

5. (a) Wahenga walisema, “Kudra ya Mungu haikosi na jitihada haiondoi kudra”. Fafanua maana na ukweli wa kauli hiyo ukirejelea tamthilia ya mfalme edipode. *(alama 17)*

(b) Kwa kutoa mifano mwafaka, Eleza jinsi laana ilivyomwathiri Edipode, familia yake na jamii nzima katika tamthilia ya Mfalme Edipode.

(alama 16)

6. (a) Jadili hulka za wahusika wafuatao kama wanavyojitokeza katika tamthilia ya Mfalme Edipode. *(alama 33)*

iv) Edipode

v) Teresia

vi) Jokasta

MABEPARI WA VENISI: William Shakespeare.

7. (a) Linganisha visa na vitendo vinavyotendeka katika tamthilia ya mabepari wa venisi na vinavyotendeka katika nchi yako. *(alama 16)*

(b) Jadili mbinu za uandishi zinazotumiwa na mwandiishi kwa kuwasilisha ujumbe katika tamthilia ya mabepari wa venisi na William Shakespeare. *(alama 17)*

8. (a) Jadili maudhui yanayozungumziwa na mwandishi katika tamthilia ya Mabepari wa Venisi. *(alama 17)*

(b) Eleza mafunzo unayoyapata unaposoma tamthilia hii. *(alama 16)*

SEHEMU B.

TIMOTHY AREGE:*Kijiba cha Moyo.*

2. a. Wahusika katika tamthilia ya Kijiba cha Moyo wanapitia changamoto nyingi sana katika maisha yao ya kila siku. Thibitisha ukweli wa kauli hii ukirejelea tamthilia yenyewe. (alama 17)
- b. Jadili jinsi ukoloni mamboleo ilivyoathiri mataifa mengi katika Bara la Afrika. (alama 16)
15. Mwandishi wa tamthilia ya Kijiba cha moyo ameipamba kazi yake kwa kutumia fani za lugha na mbinu za sanaa. Tetea ukweli wa dai hili kwa kutoa mifano kitabuni. (alama 33)

SAID A. MOHAMED:*Kimya Kimya Kimya.*

- 16.a) Jadili matatizo ambayo yameikumba nchi katika tamthilia ya Kimya Kimya Kimya. (alama 17)
- b) Mhusika Mpya ni mfano mzuri wa kuigwa na wanamapinduzi wengi barani Afrika. Thibitisha ukweli wa kauli hii ukirejelea tamthilia ya Kimya Kimya Kimya. (alama 16)
- 17.a) Bwana Binafsi hastahili kuwa kiongozi katika jamii kwa sababu uongozi wake umekosa muelekeo bora. Jadili kwa kutoa mifano ukweli wa dai hili. (alama 17)
- b) jadili athari ya uongozi mbaya katika jamii yako. (alama 16)

SEHEMU CH.

JOHN RUGANDA:*Mizigo*

- 18.KAIJA: Lakini, mama tumepazoea pahali hapa.
- TINKA: Ninafahamu.Ninafahamu sana. Si makosa yangu.
Wakija kufahamu haya, hakuna atakayenilaumu.
- KAIJA: Kulitokea nini, mama?
- TINKA: Nanyi mtakapokua mkumbuke kuwa nilisema
Ninayajutia. Nisingeweza kuvumilia zaidi.

(Tinka analia kwa sauti ya chini)

KAIJA: Mama kulitokea nini?

NYAKAKE: Ni nini, mama?

TINKA: Msiniulize maswali. Mtanitia kichaa.

KAIJA: Usiwe na shaka mama, tueleze tu.

TINKA: Mungu wangu! Nimekosa nini? Nimekosa nini?

KAIJA: Tuamini, mama. Hivi, huwezi kutuamini?

NYAKAKE: Kulitokea nini?

TINKA: Watakuwa wema kwenu, wanangu wapendwa.

Watawatunza vizuri huko katika makao ya watoto
mayatima.

KAIJA NA

NYAKAKE: Makao ya watoto mayatima!

TINKA: Ikiwezekana nitakuwa nikija kuwatembelea.

NYAKAKE: Maskini baba. Baba yuko wapi? Baba, baba.

TINKA: Ameenda kwenye mazishi....ameenda, amenda na
hatutamwona tena. Ametupa mkono.

KAIJA: Sikilizeni.

Maswali:

- f) Liweke dondoo hili katika muktadha wake. (alama 08)
- g) Jadili ujumbe unaojitokeza katika dondoo hili. (alama 08)
- h) Fafanua fani za lugha zinazojitokeza katika dondoo hili. (alama 08)
- i) Ni hisia gani zinazojitokeza katika dondoo hili? (alama 04)
- j) Jadili hulka ya wahusika wanaozungumza katika dondoo hili. (alama 06)

MASEREKA LEVI KAHAIKA: Mkwamo.

19.KASUKU: Sasa wenzetu wametusaliti, kidimbwi wameachilia

Bogabuga kote tumekwisha, bali n'tapigana mpaka mwisho.
Naskia amekodi wamanuba, twaumizana. Ya wavaa kasiki
tumesahau nakumbuka hapo awali, Bupomboli kilikuwa
kituo chetu cha biashara. Seko namuru na Padilanga vilikuwa
vituo vya kubadilishana mazao na chumvi kutoka Katwe
tulifurahi Wasulenge, Wadiliko wa budilikilo nao walishuhudia
muamala kamili sote kujuliana, sasa twaumana kipanzi.
Lakini subiri, mtego wa panya ni kwa waliomo na wasiomo
Nami wa mukidi babu, kutamauka nimeshakufa ni ahadi
Nimeshaitoa kwa hivyo ewe jemedari uliye bora fanya hima
Kimbia kilimani kawambie wapiganaji huko.....wasilale kamwe,
Wanawake wetu wamejiunga, Kasikinya hapa amepatuliza,
Ni shujaa hapa amepatuliza nami sina wasi.
Haya enenda Yarwa mpole.

KASIKINYA: Jana usiku kucha tumelinda kule chini kidimbwini walioko nao

Hawakutambua.

Ningewavamia lakini walikuwa wengi: wengi kiasi cha

Kutumeza wazima bali kwa hila.

Nikawapotosha kutafuta njia kuelekea marujubu nikawelekeza

Sehemu mbali na hapa pa Waruzi.

Nyuma wakageuka kudhani wamepotea. Kwa sasa

Wanawake wetu shujaa waende punde huko kidimbwini.

Maswali:

- f) Ni kipi kinachoendelea katika dondoo hili? (alama 06)
- g) Jadili ujumbe unaojitokeza katika dondoo hili. (alama 08)
- h) Taja sifa za wahusika wanaozungumza. (alama 06)
- i) Jadili mandhari yanayojitokeza katika dondoo hili. (alama 08)

j) Fafanua fani za lugha zinazojitokeza katika dondoo hili. (alama 06)

SEHEMU D.

ALAMIN MAZRUI:*Kilio cha Haki.*

20. Anwani ya tamthilia ya Kilio cha Haki inakisi yaliyomo. Tetea ukweli wa dai hili ukirejelea tamthilia yenyewe. (alama 33)

21. a) Jadili hadhi ya mwanamke kama anavyojitokeza katika tamthilia ya Kilio cha haki. (alama 17)

b) Unamlinganishaje mhusika lamina na wanawake katika jamii yako? (alama 16)

INNOCENT AGUME:*Chema Chajiuza.*

22. a) Jadili hulka ya wahusika wafuatao:

iv. Kunihira. (alama 11)

v. Kwatampola. (alama 11)

vi. Bakehena. (alama 11)

23. Mwandishi wa tamthilia hii aliisuka ikasukika. Jadili kwa kutoa mifano. (alama 33)

MWISHO.

**P320/3
FASIHI YA
KISWAHILI
Paper 3
MACHI 2020
3 Hours**

Uganda Advanced Certificate of Education

FASIHI YA KISWAHILI P320/3

Karatasi ya Tatu (Riwaya)

MUDA : SAA TATU

MAAGIZO;

- Jibu maswali ***Matatu tu.***
- Chagua swali moja kutoka sehemu ya ***A, B, CH au D.***
- **Sehemu CH ni ya lazima kwa wanafunzi wote. Chagua swali moja katika sehemu hii.**
- Usijibu swali zaidi ya moja kutoka kitabu Kimoja wala maswali mawili kutoka kitabu kimoja.
- Nadhifisha mwandiko wako.

SEHEMU A

AMA

UTENGANO.

Said A mohamed

- 1.(a) Jadili athari za migogoro kulingana na riwaya ya utengano.(Alama 15)
[b] Eleza namna mbinu ya Taswira Inavyojitokeza katika Riwaya ya Utengano.(Alama 18)
- 2.[a] Fafanua njia mbalimbali ambazo wanawake tofauti katika Riwaya ya utengano wanazotumia kujiondoa katika ubaba dume au mateso tofauti.(Alama 15)
[b]. Jadili hadhi ya mwanamke katika Riwaya ya utengano (Alama 18)

AU

KIU..... Mohamed .s. Mohamed

[3]. Eleza kiu anayozungumzia Mohamed.s.mohamed katika Riwaya yake ya kiu...[Alama 33]

4[a] Jadili mbinu za sanaa tofauti aligozingatia mwaudishi wa Riwaya ya kiu.[Alama 17]

[b] Eleza Namna maudhui ya mapenzi yanavyodhihiish wa ktk Riwaya ya kiu. [Alama 16]

SEHEMU B

AMA

NGUVU YA SALA.....K.W. wamitilah.

5[a]Eleza Umuhimu wa maombi/ sala Katika maisha ya kila siku na hata kulingana na riwaya ya nguvu ya sala..... [Alama 15]

[b]Jadila shida tofauti Zinazo wakumba wahusika wengi Katika Riwaya ya Nguvu ya sala.(Alama 18)

6[a]Maisha bila sala si maisha. Jadili kulinga na yaliomo Katika Riwaya ya Nguvu ya sala.(Alama 15)

[b]Eleza Jalada ya Riwaya ya Nguvu ya sala na uonyeshe dhihirisho tofauti za jalada n avis linganishi ndani ya riwaya (Alama 18).

AU

BARAKA ZA MAMA.....Vicent.m. Tweyembe.

7[a]Eleza misukosuko iliomkumba Baraka na kutatanisha maisha yake. [Alama 17]

[b]Mhusika Baraka ni kijana wa kuigwa na vijana wengine wa siku hizi Jadili.(Alama 16)

8[a]Jadili mbinu za sanaa Zozote sita Zinazozungumziwa Katika Riwaya ya Baraka za mama.(Alama 16)

[b]Onyesha ukweli kwamba mungu alikuwa Nyuma na mbele ya kijana Baraka Katika maisha yake.(Alama 17)

SEHEMU CH.

KUFA KUZIKANA..... Ken waliborah.

9. Soma dondoo hili Na kisha ujibu maswali yatakayo fuata.

Tulisadiki kuwa angeweza kutuelezea hali ya familia zetu. Hapana shaka katoka kwenye uwanja wa vita na alijua jinsi mambo yalivyokuwa.

“Kuna mtu ameniita jiina?” aliluliza hatimaye nasi tukamsogea karibu .

“Sisi tumekwita,” Tim alijibu kwa unyenyekevu .

“Mwataka nini?”

“Tumekuja kukuona na kukutakia ahueni,” alijibu Tim.

“Na nanny ni kabila gani?” Mmekuja kuinua, sio?”

“Wamjua Mzee Sululu?” nilibabaisha maneno.

“Sululu Mkanju?”

“Eeh! Basi mimi ni mtoto wake.”

“Na huyu mwenzako.”

“Rafiki yangu Tim.”

“Kabila gani ?”

“Msangura,” nilidanganya, kwa vile kweli ingaliuporomoa muamana tuliokuwa tunajaribu kuujenga kati yetu na Mzee Uledi.

“Wewe ni mtoto wa Sululu ul’okuja Tandika kuzawadiwa na waziri wa elimu?”

“Naama,” nikajibu.

“Tulifurahi musician ukitajwa redion. Mtoto wa Mkanju mwenzetu, Masomoni amewabwaga wote Kiwachema nzima .”

“Niliacha nyumbani kukiwa, kumbe mambo yatalipuka nyuma yangu.”

“Mwanangu Wakanju tumeangamwizwa kabisa.”

“Na babangu? Wajua lolote kuhusu hali yake?”

“Jioni hiyo naikumbuka uzuri,” alianza kutongoa Mzee Uledi, huku moyo wanidundadunda. “Sijui ilikuwa juzi ama ama majuzi Yale au kijomba. Nilikuwa kwenu kijana na Mzee Sululu.

Pamoja na maradhi yake, nilikwenda kumghasi anichezee gitaa.

Busaa ya ‘Mama N’tilie ilikuwa imeniingia kichwani barabara.

Basi Sululu alicharuka hasa akazikuna nyanya za gitaa zikasalimu amri .

Nikaamka na kuanza kudengua wee!” Mzee Uledi alianza kuimba;

sili vya balali

havina utamu

Kwangu afadhali

Vitu vya baramu...

Muuguzi mmoja mwanamke mweusi mrefu, mwenye mwendo wa kuyoga, alitokea ofisini mwao ghafla. Akaangaza macho huku na huku kwenye wodi.

“Nanai huyo anaimbaimba hapa?” aliuliza.

Kukanyamaza jii. Hakuna aliyethubutu kujibu.

“Wacha nisikie mtu akiimba tena, “Nye vijana mmeewapata wagonjwa wenu?” alitugeukia.

“Mmoja,” nikajibu.

“Bora mmalize mazungumzo mwende zenu. Huu si wakati wa kuwaona wagonjwa, tumewafadhailia tu.”

“Ndiyo sista,” Tim alijibu.

Muuguzi akarejea ofisini mwao.

“Yule ni mwanamke tu anatisha nani?” Mzee Uledi alijipa kusema kwa mnong’ono.

“Hebu twambie habari za Mzee Sululu ,” Tin alimhimiza.

“Eeh! Muradi tulikuwa twafurahia uhondo wa muziki pamoja na Mkanju mwenzangu. Hata alipokuwa acheza muziki nikamtania ‘Sululu ulifanya kosa kwa kutokuoa baada ya kufiwa na mkeo, sasa nani anakutunza?’ Na mtu mraufu pale alipo, hakereki kwa kero kama hizo, alijichekea tu. Basi ghafla alikuja Mkanju mmoja, pumzi zimempaa, majasho yanamtoka. ‘Kimbieni wanakuja,’ alipaaza sauti. ‘Nani wanakuja?’ tukamwuliza. ‘Mnakufa nye ; Jeshi la Wakorosho linakuja liko ng’ambo ya Mto Kibisi. Kimbieni; N’kamishi Sululu tutoroke pamoja. Akesema ‘Nione nilivyovimba maguu, nitakimbiaje? Nye nendeni. Mimi watanikuta papahapa.’ Mzee Uledi alitua kitambo na kupiga chafya.

“Palikuwa hapana budi ila kila mtu kuiokoa nafsi yake mwenyewe. Nilimwonea imani mwenzangu, ila ningefanya nini? Nilitazama ng’ambo kule n’kaona wingu la moshi na miale ya moto, nyumba zinateketea. Nikaiambia miuguu yangu ‘niponye; Hata watoto wangu na wake zangu sikuwafikiria. Nilipasua weu, nilikata mbuga. Tembo likanitoka kichwani. Almuradi mahambe wale hawakunipata.”

“Na majeraha ulipataje?” Tim alimsaili.

“Mguu wangu ulitumbukia shimoni n’kaanguka vibaya. Nilivinjika mguu, hebu tizama,” alinyanyuwa shiti tukaona kikandiko kilichoufunika mgu wake wa kushoto.

“Kipaji changu nacho kikaumia kidogo kwa mshindo wa anguko langu. Ulikuwa usiku wenye kiza totoro. Basi nilijiburura kwa taabu kama konokono. Kulipoanuka nilikuwa nimefika kando ya barabara. Walipita wahisani walionichukua kwa gari lao na kuniletea hapa.”

MASWALI.

- a) Andika muktadha wa dondoo hili awali (Alama 08)
- b) Jadili visa tatu vinavyodhihirishwa katika dondoo (Alama 06)
- c) Eleza wasifu hasi tatu za mzee Uledi kulingana na dondoo (Alama 06)
- d) Jadili usanii uliomo katika dondoo hili awali (Alama 06)
- e) Fafanua mtazamo wa mwandishi juu ya maisha ya Akida na Tim katika riwaya nzima (Alama 05)
- f) Jadili hisia za mwandishi katika hadithi awali (Alama 03)

SEHZMU D

AMA

UHASAMA KILIMANI.....George Black masereka

10[a] Onyesha Namna mwandishi anavyochora mbinu ya Taswira katika Riwaya hii ya uhasama kilimani. (Alama 16)

[b] Mbali Na Taswira, Jadili mbinu Nyinginezo za uandishi anazo zungumzia mwandiisha. (Alama 17)

11[a] Jadili maudhui Nane ukitoa mifano kuntu, ktk Riwaya ya Uhasama kilimani (Alama 16)

[b]. Ni uhasama gani anaозungumzia mwandishi wa Riwaya hii .onyesh ukizingatia hoja tano zenye mifano kutoka riwaya (Alama 17)

AU

JITIHADA ZA FUA DAFU.....wanyenye willy.

12;[a] Eleza Namna mada ya Riwaya ya Jidihada zafua Dafu Inavyojitokeza katika Riwaya ukizingatia hoja saba zenye uhakiki. (Alama 17)

[b]. Jadili sifa hasi na chanya za mhusika masombo ktk Riwaya ya Jitihada zafua Dafu. (Alama 16)

13.[a] Fafanua usawiri wa mwanamke katika Riwaya hii ya Jitihada Zafua Dafu (Alama 18)

[b]. Eleza Athari za mapenzi kulingana na Riwaya ya Jitihada Zafua Dafu. (Alama 15)

MWISHO

HOLIDAY WORK
S.6 LUGANDA PAPER 1

(Amateeka, enkozesa y'olulimi, obuwangwa n'abawandiisi)
Olupapula olusooka

Essawa bbiri n'ekitundu. (2hrs: 30mins)

EBIGOBERERWA:

- *Olupapula luno lugabanyiziddwamu ebitundu bisatu: A, B ne C*
- *Ekitundu A kya buwaze. Mu kitundu B kola nnamba 2, 3 ne 4.*
- *Mu kitundu C, kolayo ekibuuzo kimu kyokka.*

EKITUNDU A

1. A) Nga weeyambisa ebyokulabirako, nyonyola ebigambo bino nga we bikozebwa mu ggulaama (obubonero 06)

- I. Erinnya erikolebwako obutereevu
- II. Erinnya ekkozi
- III. Erinnya erikolebwako oluvannyuma.

b) Oluusi ebigambo bwe biwulirwa ate si bwe biwandiikibwa. Leeta engeri nnya we tuwulira eddoozi eriwangaala kyokka ne tataliraga mu mpandiika. (obubonero 04)

c) Ddamu owandiike sentensi zino wammanga ng'ebikolwa ebirimu obifudde ebiyambi. (obubonero 04)

- I. Lwaki buli ssaawa oba naye?
- II. Nze nnali mu kifo kyomumaaso ku olwo.
- III. Katonda ayinza byonna.
- IV. Ate leero wabadde ki?

d) Leeta ensonga ttaano lwaki amannya gano **butto** ne **bbuto** tegagwa mu lubu lw'amannya lwe lumu. (Obubonero 05)

e) Amannya gano wammanga gakoze mu sentensi nga buli linnya olikozesa nga Nakongezakikolwa. (obubonero 02)

- i. Omuserikale
- ii. Omukazi

f) Longoosa ensobi ezikoleddwa mu mpandiika y'emboozu eno (obubonero 06)

Okuwaangaala kunno kutulabisa ebintu. Katondda namugereka eyawunda ensi eno yajiteekamu ebyeewunyisa nfafa. Ogenda nosanga omuntu ng'ensimbi zimuyitaba nayenga talina wadde akaana mubulamu. Kyoka noolaba omwavu lunkupe ng'ewaka wajjude oluggube lwobwana.

g) Sentensi zino ddamu oziwandiike ng'ozizza mu nakamwantette. (obubonero 03)

- I. Wabula ku olwo twakubwa emiggo
- II. Omulwadde alumwa bambi.
- III. Abayizi baatwalibwa okulambula,

h) Nga weeyambisa ebyokulabirako, nyonnyola obubonero bw'ebiseera bino wammanga. (obubonero 04)

- i. Ekyayise
- ii. Ekyakayita

i) Jjuza mu mweso ogukuweereddwa wammanga. (obubonero 06)

E r i n n y a	Nakasiba	Nakasigir wa eggumiza	Nakasi girwa enkaka si
E s s o m e r o	I	Ii.....	Iii
O m u s e n y u	Iv	V.....	Vi

EKITUNDU B

*Ddamu ebibuuzo bisatu mu kitundu kino.
Kola nnamba 2, 3 ne 4 ng'ogoberera ebikuweereddwa.*

Ddamu 2 (a) oba 2 (b)

2. (a) Nyonyola ng'owa ebyokulabirako ebyobuwangwa by'Abaganda ebyekuusa ku Luggya.

(obubonero 20)

Oba

b) i) Lwaki abaganda bagoberera empisa y'okwabya olumbe?

ii) Menyayo emitendera etaano egigobererwa mu kwabya olumbe. (obubonero 20)

Ddamu 3(a) ne 3(b)

3 (a) Ku bisoko ebikuweereddwa londako bina (04) onyonnyole amakulu gaabyo agoomunda. (obubonero 04)

- I. Okuba n'omumwa
- II. Okulengezza omuntu
- III. Okufa ekizizi
- IV. Okufuna ogwa Nanteza e Bulamba
- V. Okwekola omuntu
- VI. Okukuba omuntu oluuso.

(b) ku bisoko ebikuweereddwa londako bisatu obikozese mu sentensi eziggyayo amakulu gaabyo agoomunda. (obubonero 06)

- I. Okukuba wuuli
- II. Okulima empindi ku mabega
- III. Okukunnumba obute
- IV. Okukolerera amafaaya
- V. Okubuuka enswa

4. Ddamu 4(a) ne 4(b)

(a) Ku ngero zino wammanga londako nnya ozimaleyo nga bwe zoogerwa. (obubonero 04)

- I. Erwanira obuko
- II. Eka embi
- III. y'amera amayembe.
- IV. togiteresa munno.
- V. Okubwesooka si kubulya.....
- VI. Tunaayitanga babiri

b) Ku ngero ezikuweereddwa londako ssatu onyonnyole amakulu gaazo agoomunda. (obubonero 06)

- I. Ku mbaga tekubula musiiwuufu.
- II. Abikka ebibiri, tabojja.
- III. Kasennyanku, z'atyaba ze zimwokya.
- IV. Lubaale yambikkako akasubi nga ne weeyeekweka waali wagumu
- V. Aganaanyuma tegalinda ngoma

EKITUNDU C

Ddamu ekibuuzo kimu okuva mu kitundu kino ng'okiggya mu nnamba 5, 6
oba 7

5. kola 5(a) oba 5(b)

a) Nyonyola engeri Eggwanga gye liganyulwa mu buweereza bwa Masagazi
ng'omukulembeze. (obubonero 20)

Oba

b) Weesigame ku kimu ku bitabo bya Masagazi olage nga bwe yeeyolese nga
munnabyabuwangwa. (obubonero 20)

6. kola 6(a) **oba** 6(b)

a) Eggwanga liyinza litya okwenyumiriza mu mirimu gya Kalinda gye
yakolera ekitongole ky'ebyenjigiriza.
(obubonero 20)

oba

b) Ebiwandiikiddwa mu Bazibumbira biyinza bitya okuyamba abakyali mu
ssomero okukyusa enneeyisa yaabwe? (obubonero
20)

7. kola 7(a) **oba** 7(b)

a) Obwagazi bwa Ddamba eri obuwangwa bwe abwolesezza atya
ng'ayita mu Katemba.
(obubonero 20)

oba

b) Weesigame ku kitabo 'ekitone zzaabu' olage engeri Ddamba gy'ayagasizza
abantu abato okwagala ensi yaabwe. (obubonero 20)

Bikomye wano.

Students Name:Index No.
.....

HOLIDAY WORK

UGANDA ADVANCED CERTIFICATE OF EDUCATION

CHRISTIAN RELIGIOUS EDUCATION p245/1

(THE OLD TESTAMNET)

TIME: 2HRS 30MINS

INSTRUCTIONS

- This paper has three sections, A, B and C
- Attempt four questions, choosing at least one from section A and B and TWO from section C
- In section C, choose one question from the wisdom books and another from the prophetic books.
- All questions carry equal marks.
- Any extra question(S) shall not be assessed.

SECTION A LAW BOOKS

1 (a) Examine the importance of Abraham in the life of the Israelites.(13 marks)

(b) Examine the relevance of Abraham's experience to the Christians today. (12 marks)

2. (a) Examine the importance of sacrifices in the religion of Israel. (13 marks)

(b) Explain the reasons why the prophets at times preached against the Offering of sacrifices. (12 marks)

3. (a) Examine Moses' teaching about the theme of love in the book of Deuteronomy. (13 marks)

(b) Comment on the New Testament teaching on the theme of love. (12 marks)

4. (a) Account for the development of syncretism among the Israelites (13 marks)

(b) Examine the ways through which Christians today practice religious syncretism.

(12 marks)

SECTION B HISTORICAL BOOKS

5. (a) Analyze the significance of Judges in life of the Israelites. (13 marks)

(b) What challenges do judges face in Uganda today? (12 marks)

6. (a) Discuss the view that the rejection of priest Eli at Shiloh and his family was not accidental. (13 marks)

(b) Examine the ground on which religious leaders today should be rejected. (12 marks)

7. To what extent was David a model king in Israel? (25 marks)

SECTION C (PROPHETIC & WISDOM BOOKS)

8. (a) To what extent was the Israelites understanding of the day of the Lord

different from the pre exile prophets? (13 marks) (b) What

views do the Christians have about the second coming of Jesus Christ? (12 marks)

9. To what extent was Amos a prophet of doom? (12 marks)

10.(a)Examine the evils which were condemned by prophet Hosea.(13 marks)

(b)Examine the significance of Hosea's experience to modern Christians today. (12 marks)

11.(a) Discuss the meaning of Ezekiel's vision of the valley of dry bones.

(13 marks) (b) Examine the significance of the resurrection to the Christian church.(12 marks)

12. Examine the nature of God as revealed in the experience of Job's suffering. (13 marks)

(b) How relevant is Job's experience of suffering to modern Christians? (12 marks)

END