

**P720/2**

**GEOMETRICAL &  
BUILDING DRAWING**

**Paper 2**

**July/August 2025**

**3 hours**

**KSS INTERNAL MOCK EXAMINATIONS 2025**

**Uganda Advanced Certificate of Education**

**BUILDING DRAWING**

**Paper 2**

**3 Hours**

**INSTRUCTIONS:**

- *This paper consists of **four** questions.*
- *Answer **all** questions.*
- *Where dimensions are not given suitable dimensions are to be chosen.*
- *This question paper consists of two sections **I** and **II** and a total of **four** questions*
- *Use the drawing paper size **A2** provided*
- *Interpret properly the specifications and figure provided before you attempt any question*
- *Neatness and good pencil work will earn you marks*
- *All dimensions are in millimeters unless otherwise stated*
- *All given figures are **not** drawn to scale*
- *The answer to all questions must be drawn to the given dimensions*

*Figure 1* shows a line diagram of a **RESTAURANT** not drawn to scale, it is to be drawn with the following specifications.

### **SPECIFICATIONS:**

**ROOF:** The main block is covered in clay roofing tiles at 35<sup>0</sup> pitch angle anchored on 37x37mm battens placed on a layer of roofing felt. The timber roof truss is made of Rafters of 150mm x 50mm. Fascia board of 200mmx25mm is used, Wall plates are 100mmx75mm, Tie beams are 150mmx50mm, Ridge board is 200mmx50mm, Struts and purlins 100mmx50mm

The roof is finished with closed eave

The front sit-out is covered with a 150mm solid reinforced flat roof.

The behind sit-out and staff restroom is covered with 200mm thick solid reinforced slab at 2750 above the floor level with 250mm beams accommodating a terrace with railings along its edges.

**WALLS:** All walls are 230mm thick bonded in English bond and are 3200mm high from floor finish level to underside of the wall plate.

**DOORS:** D1-2800mm wide X 2400mm high, two fixed and two sliding metallic casement doors.  
D2-900mm X 2100mm, Three raised panel door  
D3-900mm X 2100mm, standard flush door  
D4-1000mm X 2100mm, steel panel door

All external doors are built with Permanent. Vents. Over

**WINDOWS:** W1-2000mm x 1400mm sliding casement metallic window  
W2-600mm x 800 mm top hung casement metallic window  
W3-1500mm x 1400mm sliding casement metallic window  
W4-1200 mm x 1000mm opening with burglar proofing

All external windows are built with P.V.O

**FLOOR:** 150mm thick concrete bed laid over 200mm thick hardcore bed on well compacted murrum. The floor is finished with 25mm cement and sand screed.

**FOUNDATION:** Strip foundation 230mm x 690mm at 1200mm below the ground level.

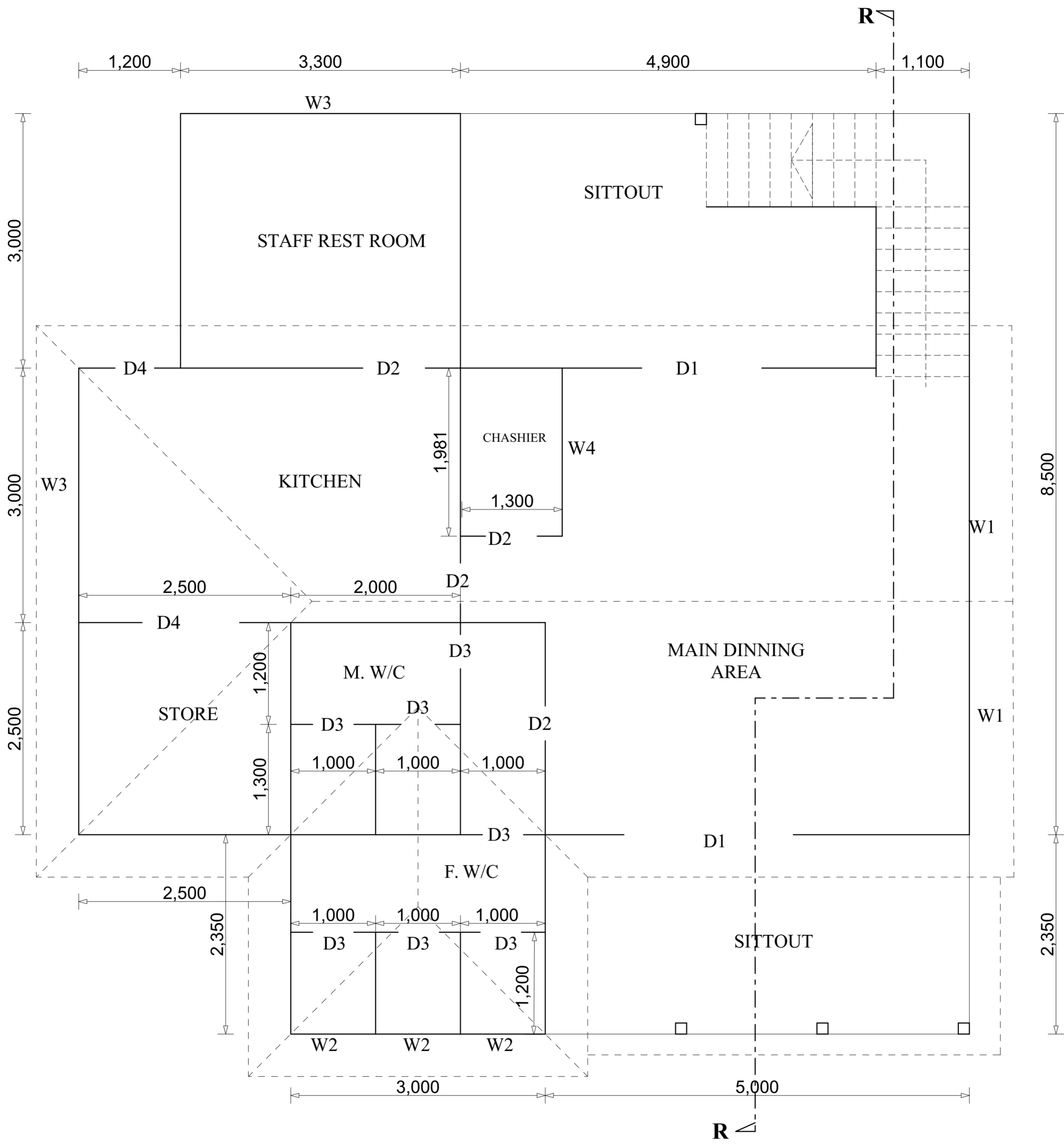
<b>RING BEAM:</b>	Reinforced concrete beams 230 X 250mm all over the building at 2400mm above the floor finish.
<b>COLUMN:</b>	All columns are 230X230mm and 2400mm high
<b>ARCHES</b>	Segmental arches over the sit-outs
<b>SPLASH APRON:</b>	The apron is 600mm wide and 150mm thick.
<b>STAIR</b>	Reinforced concrete quarter turn stair finished with 25mm cement & sand screed, 1100mm wide flight with 1100mm wide landing. 250mm going and 180mm risers, the stair is fenced by balustrades 900mm high.

### ***SECTION I***

1. Draw a proportional freehand pictorial sketch of the building from position **P** **(25 marks)**

### ***SECTION II***

2. Use the given specification and line diagram to answer the following questions.
  - (i). To a scale of **1:100**, draw a plan of the building and show the necessary symbols for the sanitary fittings, doors and windows including furniture in the main dining area **(30 marks)**
  - (ii). To a scale of **1:50**, Draw a sectional Elevation along cutting plane **R–R** and show roof details. **(30 marks)**
3. Draw to a scale **1:10** construct plan of course one and two of wall at the bottom left corner of the store. **(10 marks)**
4. At the bottom right-hand corner of the answer sheet, draw a title block and print your ***name, examination paper code, title, scale used and date.*** **(05 marks)**



FLOOR PLAN

*All dimesions are taken internally*

**P**